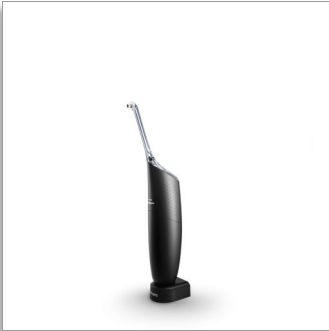


Philips Sonicare  
AirFloss Pro/Ultra -  
Dispense

1 nozzle



HX8481/03

## A triple burst of better gingival health

Efficacy meets compliance for infrequent flossers

For those who don't floss consistently, AirFloss Pro/Ultra\*\*\*\* is the easiest way to effectively clean between teeth. AirFloss Pro/Ultra can be used with mouthwash or water and is clinically proven as effective as floss for gum health.\*\*

### Improves patients' oral health

- Clinically proven as effective as floss for gum health\*\*
- Helps prevent cavities between teeth
- Up to 99.9% plaque removal\*\*\*

### Superior technology

- High performance nozzle
- Air and micro-droplet technology
- Triple burst customization

### The easiest way to effectively clean between teeth

- Takes just 60 seconds: Point, Press, Clean!
- Fresh and clean with mouthwash
- An easy way to start a healthy habit

**PHILIPS**  
**sonicare**

# Highlights

## Up to 99.9% plaque removal



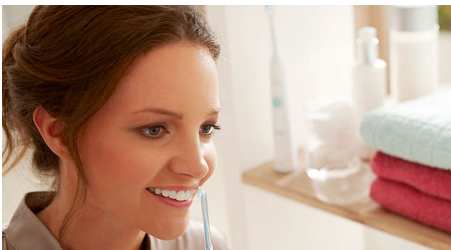
AirFloss Pro/Ultra removes up to 99.9% of plaque from treated areas.\*\*

## Micro-droplet technology



Our clinically-proven results are possible from our unique technology that combines air and mouthwash or water to powerfully yet gently clean between teeth and along the gumline.

## Easily start a healthy habit



Interproximal cleaning is very important to overall oral health. AirFloss Pro/Ultra is an easy way to clean deeper between teeth, helping to form a healthy habit.

## Better gum health



Philips Sonicare AirFloss Pro/Ultra is clinically proven to improve gum health as much as floss.\*\* Helps improve gum health in as little as two weeks.

## Cleans in just 60 seconds



With the AirFloss Pro/Ultra, patients can clean their entire mouth in less than 60 seconds a day. Patients simply select their desired burst frequency (single, double or triple) and hold down the activation button for continuous automatic bursts or press and release for manual burst mode.

## Helps prevent cavities between



By gently bursting away plaque that brushing missed, Philips Sonicare AirFloss Pro/Ultra helps prevent cavities from forming in the spaces between patients' teeth.

## High performance nozzle



The new AirFloss Pro/Ultra high performance nozzle amplifies the power of our air and micro-droplet technology to be more effective and efficient than ever.

## Triple burst customization



AirFloss Pro/Ultra's powerful spray can be customized to your patient's liking with single, double, or triple bursts for each press of the activation button.

## Fresh and clean with mouthwash



Patients can use with mouthwash for the ultimate fresh experience and anti-microbial benefits.

# Specifications

## Design and finishing

- Color: Black

## Power

- Voltage: Multi-voltage charger

## Technical specifications

- Battery: Rechargeable
- Battery type: Lithium ION
- Charge time: 24 hours to full charge

## Service

- Warranty: 2-year limited warranty

## Ease of use

- Handle: Slim ergonomic design
- Battery indicator: Handle LEDs show charge level

- Nozzle attachment: Easily snaps on and off
- Battery Life: 1-3 weeks\*\*\*\*

## Items included

- Charger: 1
- AirFloss Pro/Ultra handle: 1
- AirFloss Pro/Ultra nozzle: 1

## Cleaning performance

- Health benefits: Cleans entire mouth in 60 sec, Improve gum health in 2 weeks\*
- Performance: Removes up to 99.9% plaque\*\*
- Clinically proven results: As effective as floss, for gum health improvement, for plaque reduction, for reducing gum bleeding
- Customizable settings: Auto-burst or manual burst, Single/double/triple burst\*\*\*
- For best results: Change nozzle every 6 months



Issue date 2023-01-13

Version: 2.2.1

EAN: 00 07502 00817 97

© 2023 Koninklijke Philips N.V.  
All Rights reserved.

Specifications are subject to change without notice.  
Trademarks are the property of Koninklijke Philips N.V.  
or their respective owners.

[www.philips.com](http://www.philips.com)

\*\*When used in conjunction with a manual toothbrush and antimicrobial rinse in patients with mild to moderate gingivitis. AirFloss is designed to help inconsistent flossers develop a healthy daily interdental cleaning routine. For more information, please visit [www.philips.com/airfloss/faq](http://www.philips.com/airfloss/faq).  
\*\*\* From the treated areas; In a lab study, actual in-mouth results may vary  
\*\*\*\*AirFloss Ultra and Pro are the same product but may be named differently depending on the country and channel.  
\*\*\*\*\* depending on burst setting used