



Philips Viva Collection
SoupMaker

1.2L with 5 programs

Stainless single housing
0.8m cord
Booklet with 31 recipes



HR2200/81

Your soups, compotes and smoothies made easy

Healthy. Delicious. Homemade.

The Philips SoupMaker has 5 pre-set programs for ultimate versatility. It can make smooth soup, chunky soup, compote and smoothies. You can also use it as a normal blender. Preparing your favorite homemade recipes has never been so easy!

Effortlessly easy

- Large 1.2 L jar serves 4 portions
- Easy clean
- Keeps warm for 40 minutes
- No need to stir and monitor during cooking
- Simple user interface with 5 pre-defined settings

Maximum versatility

- Extra manual blending function for your perfect results
- Hot and cold blending for soups, compotes, smoothies & more
- A recipe book is included offering inspirational recipes

Instant perfect results

- Robust stainless steel jar
- Create your favorite soup within 20 minutes
- Power 990 W

PHILIPS

Highlights

5 pre-defined settings



The Philips SoupMaker has a simple user interface which consists of 5 pre-defined settings.

Create your favorite soup



With the Philips SoupMaker you can create your favorite soup within 20 minutes.

Easy clean



Easy clean

Hot and cold blending



5 pre-defined settings for smooth soups, chunky soups, compotes, smoothies and manual blending.

Keeps warm for 40 minutes

The Philips SoupMaker will keep your soup warm for 40 minutes.

Large 1.2 L jar



Large 1.2 L jar serves 4 portions

Manual blending function



Extra manual blending function for your perfect results.

No need to stir

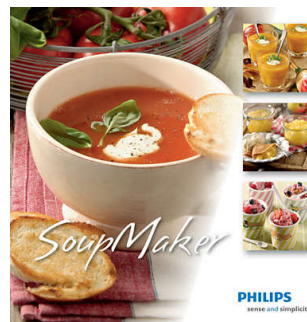
No need to stir and monitor during cooking

990 W heating power



Thanks to efficient 990W heating power, your favorite soups are ready within 20 minutes.

Recipe book included



A recipe book with more than 30 tasty, inspiring recipes and with expert tips is included.

Stainless steel jar

Robust stainless steel jar

Specifications

Design

- Material jar: Stainless steel
- Color(s): Star white, black and red

Technical specifications

- Cord length: 0.8 m
- Capacity: 1.2 L
- Voltage: 220-240 V
- Frequency: 50-60 Hz
- Number of programs: 5
- Heating power: 990 W
- Motor power: 180 W

Consumer Trade Item

- Height: 34

- Width: 22
- Length: 22
- Net Weight: 1.75
- Gross Weight: 2.78
- GTIN: 08710103648130
- Country of origin: CN
- Harmonized system code: 851679

Outer Carton

- Height: 35.5
- Width: 23
- Length: 45.5
- Gross Weight: 5.88
- GTIN: 18710103648137



Issue date 2023-03-16

Version: 1.1.1

EAN: 87 10103 64813 0

© 2023 Koninklijke Philips N.V.
All Rights reserved.

Specifications are subject to change without notice.
Trademarks are the property of Koninklijke Philips N.V.
or their respective owners.

www.philips.com