

# PHILIPS

## Straightener

### SalonStraight Ceramic

200°C

Ceramic

HP4642/00



## Long-lasting salon straight styles

### SalonStraight Ceramic

Want to create straight looks that last? The SalonStraight Ceramic heats to a professional styling temperature of 200°C and features Ceramic plates for beautifully shiny, salon-straight results everytime.

#### **Ease of use**

- Cool tip for easier and safer use
- Easy lock for convenient storage
- 1.8 m power cord

#### **Beautifully styled hair**

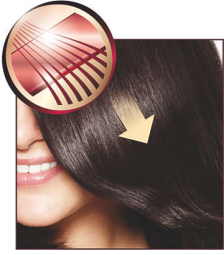
- Ceramic plates for smooth gliding and shiny hair
- 200°C professional high heat for perfect salon results
- Adjustable heat settings to ensure smooth results

#### **Time saving**

- Instant heat: ready to use within 30 seconds

# Highlights

## Ceramic plates



Ceramic is microscopically smooth and durable by nature and it is one of the best materials for straightening plates. The plates glide effortlessly through your hair, giving you perfect shiny hair.

## 200°C professional temperature

This high temperature enables you to change the shape of your hair, and gives you that perfect look like you've just come from the salon.

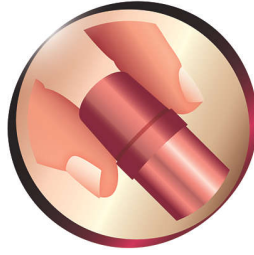
## Adjustable heat settings

Adjustable heat settings allow you to quickly and easily change the styling temperature from low to high. This enables you to select the perfect temperature for your specific hair and needs so you can always get the smooth, styling result you want.

## Instant heat

Now more waiting around for your styler to heat up, this allows you to switch on and get styling.

## Cool tip



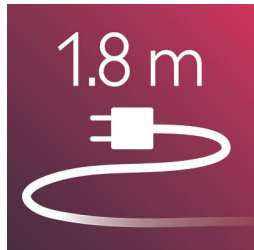
The tip of the styler is made from a special heat-insulating material to keep it cool; you can safely hold it while you're styling for optimal ease of use.

## Easy lock



The straightener has an easy lock mechanism. Located at the base of the straightener, this flip lock makes storage quick and easy and will help to protect the straightener from accidental damage.

## 1.8 m cord



1.8 m power cord

# Specifications

## Weight and dimensions F-box

Net product dimensions excl. attachments:

310 (L) x 30 (W) x 13 (H) mm

F-box dimensions: 320 x 80 x 150 (H) mm

Weight of net product incl. attachments:

461.6 g

F-box volume: 3840 cm<sup>3</sup>

F-box weight (including product): 734 g

## Pallet

Number of layers: 6

Pallet dimensions: 1200 x 800 mm

Number of A-boxes per layer: 6

Pallet quantity: 288 pcs

## Weight and dimensions A-box

Number of F-boxes in A-box: 8

A-box dimensions: 340 x 335 x 324 (H) mm

A-box volume: 36903.6 cm<sup>3</sup>

A-box weight: 6472 g

## Serviceability

Replacement

## Logistic data

Country of origin: China

CTV code: 8844-642-00

EAN: Please refer to paccdoc for applicable

## Technical specifications

Color/finishing: Black with warm gold ceramic-coated plates

Voltage: 220-240 V

Cord length: 1.8 m

Material housing: PET

Heater type: PTC

