

# PHILIPS

## Hairdryer

### SalonShine Care

HP8201



## Professional style, professional care

### SalonShine Care

Get the style you want whilst looking after your hair. The SalonDry Pro offers 1600W of professional drying power.

#### Easy to use

- Compact design for easy handling
- 1.8 m cord for maximum flexibility
- Easy storage hook for convenient storage
- Foldable handle for easy portability

#### Beautifully styled hair

- Narrow concentrator for focused airflow
- Six flexible speed and temperature settings for full control
- Volume diffuser enhances volume, for curls and bouncy styles
- 1600W for gentle drying
- Specially designed for Asians
- Coolshot for seal in shine and fix your style

#### Less Hair Damage

- EHD+ technology for more protection and shinier results
- Thermoprotect for a constant caring temperature of 57°C

# Highlights

## Specially designed for Asians



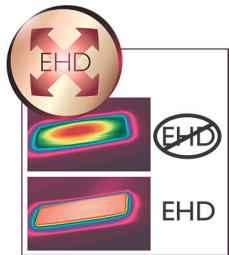
Specially designed for Asians

## 1600W for gentle drying



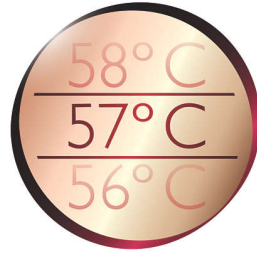
This 1600W hairdryer creates the optimum level of airflow and gentle drying power, for beautiful results every day.

## EHD+ technology



Advanced Philips EHD+ technology means that your dryer will always distribute the heat very evenly - even at high temperatures, and prevents damaging hot spots. This gives added protection and thus helps to keep your hair healthy and shiny.

## Thermoprotect 57 C



Built in protection for hair, Thermoprotect retains a constant caring temperature of 57°C. This allows you to quickly dry your hair without overdrying, maintaining your hair's natural moisture level, for shiny healthy looking hair.

## Six flexible speed settings



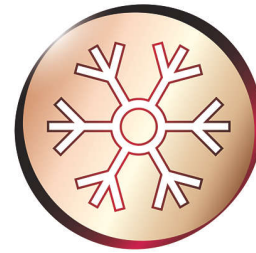
The speed and heat required can be easily adjusted to create the perfect style. Six different settings ensure full control for precise and tailored styling.

## Foldable handle



This hairdryer benefits from a foldable handle. The result is a small, compact hair dryer that will easily pack into the smallest spaces and you can take virtually anywhere.

## Coolshot



Coolshot for seal in shine and fix your style

## Compact design



Compact and ergonomic, this hairdryer benefits from a clever modern design. This results in a dryer that is light and easy to handle yet small enough to store virtually anywhere.

## Easy storage hook



The rubberised hook is located at the base of the handle and provides another storage option, particularly convenient for use in the home or when staying at a hotel.

# Specifications

## Technical specifications

Cord length: 1,8 m

Wattage: 1600 W

## Features

Foldable handle

Cool shot

Hanging loop

## Service

2-year guarantee

