

# PHILIPS

Wet & dry electric  
shaver

Shaver series 9000  
SensioTouch

UltraTrack & GyroFlex 3D

60 min cordless use/1h charge

Precision trimmer

RQ1260/17



## Ultimate shaving experience

with GyroFlex 3D system

Our most advanced shave yet, the SensioTouch 3D RQ1260 shaver gives you the ultimate shaving experience. The GyroFlex 3D system follows every contour of your face and shaves every hair in just a few strokes with its UltraTrack heads.

### **Follows the unique contours of your face**

- Philips GyroFlex 3D system adjusts seamlessly to every curve

### **Sensationally smooth shave**

- UltraTrack heads catch every hair with just a few strokes
- Shavers with Super Lift&Cut Action

### **An electric shaver which takes care of your skin**

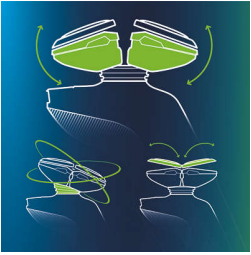
- Aquatec seal for comfortable dry & refreshing wet shaves
- Smooth, low-friction SkinGlide to minimize irritation

### **Shave with perfect control and precision**

- Easy grip handle with ergonomic grip for close control
- Skin friendly precision trimmer

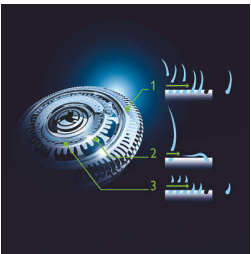
# Highlights

## GyroFlex 3D Shaver



GyroFlex 3D contour-following heads of the shaver adjust seamlessly to every curve of your face, minimizing pressure and irritation on your skin.

## UltraTrack Shaver Heads



Get a close shave that minimizes skin irritation. The shaving head has 3 specialized tracks: slots for normal hair; channels for long or flat laying hair; and holes for the shortest stubble on your face.

## Super Lift & Cut Action



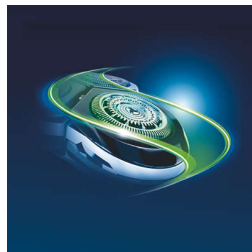
The dual blade system built into the Philips electric shaver lifts hairs to cut comfortably below skin level for a closer shave.

## Aquatec



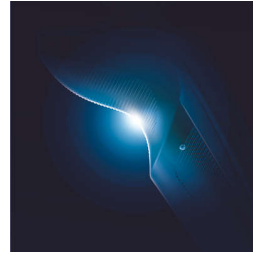
The Aquatec wet & dry seal of the electric shaver lets you choose how you prefer to shave. You can get a comfortable dry shave or a refreshing wet shave using a shaving gel or foam for extra skin comfort.

## SkinGlide



The low-friction SkinGlide shaving surface of the electric shaver slides smoothly along your skin for a close easy shave.

## Easy grip



The easy grip shaver handle has an ergonomic grip with anti-slip coating, ensuring close control for an extra precision shave.

## Precision trimmer



The unique skin friendly precision trimmer system is built to avoid unnecessary skin contact. Easy to use for perfect moustache and sideburn trimming.

# Specifications

## Accessories

**Maintenance:** Cleaning brush, Protective cap

**Stand:** Charging stand

**Pouch:** Soft pouch

## Power

**Battery Type:** Lithium-ion

**Run time:** 60 minute(s)

**Stand-by power:** 0.15 W

**Max power consumption:** 5.4 W

**Automatic voltage:** 100-240 V

## Design

**Handle:** Slim handle, Easy grip, Anti-slip grip

**Finishing:** Metallic frame, LED Display

**Color:** Silver

## Service

**2-year guarantee**

**Replacement head:** Replace every 2 yrs with RQ12

## Shaving Performance

**Shaving system:** UltraTrack shaving heads, Speed XL shaving heads, DualPrecision System, Patented Super Lift & Cut

**Contour following:** GyroFlex 3D contour

following

**SkinComfort:** SkinGlide

**Styling:** Skin friendly precision trimmer

## Ease of use

**Charging:** 1 hour, Rechargeable, Cordless, Quick charge

**Wet & Dry:** Wet and dry use

**Cleaning:** Washable

**Display:** 5 level battery indicator, Battery low indicator, Charge indicator, Travel lock, Cleaning indicator, Replace shaving heads indicator

**Shaving time:** Up to 20 days

