

Philips Shaver series 9000
Shaving heads

V-Track Precision blades

Fits S9000 (S9xxx)

Fits Star Wars Shaver SW97xx

Fits Star Wars Shaver SW67xx

SH90/51



Reset your shaver to new

Change heads every 2 years for best results

Within two years your shaver heads cut 9 million hairs on your face. Replace the shaver heads and get back to 100% performance. Compatible with the Series 9000 Shaver.

Easy to use

- Reset your shaver after replacing shaving heads
- Easy to replace heads
- Replace your shaving heads in just two steps
- Reset your shaver to new

Compatibility

- Replacement heads for Shaver series 9000

Single pass, precise shave

- Perfectly guides hairs for a close shave with V-Track blades
- Lifts hairs to cut comfortably close

PHILIPS

Shaving heads

V-Track Precision blades Fits S9000 (S9xxx), Fits Star Wars Shaver SW97xx, Fits Star Wars Shaver SW67xx

SH90/51

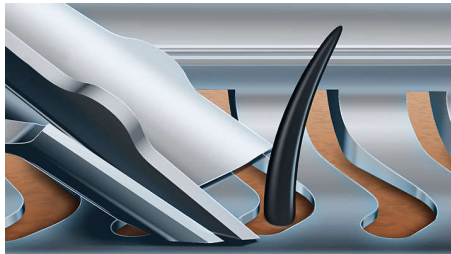
Highlights

Compatible with Series 9000



SH90 replacement heads are compatible with Shaver series 9000 (S9xxx), 8000 (S8xxx), Star Wars shaver SW9700 and SW6700.

V-Track Precision Blades



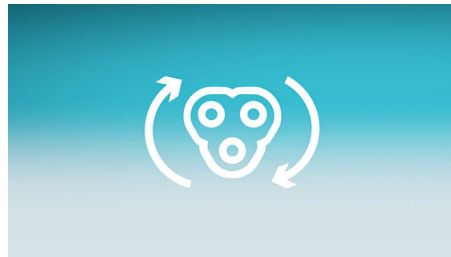
The patented V-Track Precision Blades gently position each hair in the best cutting angle, even hairs that are flat or different lengths. This allows you to cut 30% closer in less strokes leaving your skin in great condition.

Super Lift & Cut Action



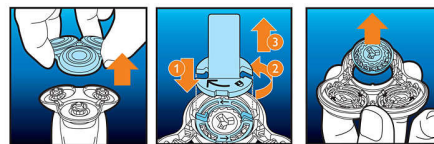
Shave closer with the dual-blade Super Lift & Cut action. The first blade raises each hair while the second blade comfortably cuts below skin level, for really smooth results.

Replacement reminder



The latest Philips shavers have an inbuilt replacement reminder in the form of a shaving unit symbol. This symbol will light up and indicate you when to replace shaving heads.

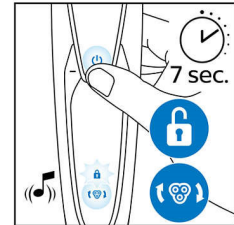
Simple replacement



1. Pull the shaving head holder off. 2. Replace the shavings heads with new ones. 3. Reattach

the shaving head holder. 4. To reset the shaver, press and hold the on/off button for more than 5 seconds.

How to reset your shaver



After replacing shaving heads, you can reset the replacement reminder by pressing the on/off button for more than 7 seconds. Otherwise, replacement trigger will turn off automatically after 9 successive shaves.

Reset your shaver to new



To get back to 100% performance, replace your shaving heads every 2 years.

Shaving heads

V-Track Precision blades Fits S9000 (S9xxx), Fits Star Wars Shaver SW97xx, Fits Star Wars Shaver SW67xx

SH90/51

Specifications

Shaving heads

- Fits product type: Shaver series 9000 (S9xxx), Shaver series 8000 (S8xxx)
- Shaving heads per packaging: 3

Accessories

- Included in pack: Retaining ring holder



Issue date 2023-12-12

Version: 16.0.1

EAN: 87 10103 67527 3

© 2023 Koninklijke Philips N.V.
All Rights reserved.

Specifications are subject to change without notice.
Trademarks are the property of Koninklijke Philips N.V.
or their respective owners.

www.philips.com