

PHILIPS

Replacement
shaving heads

SH91

NanoTech DualPrecision Blades

Fits S8000, S9000, i9000 series

Fits S9000 Prestige series

Fits i9000 Prestige series

SH91/51



Reset your shaver to new

Replace every 24 months for a shaver like new

Within two years, your shaver heads cut 9 million hairs on your face. Replace the shaver heads and get back to 100% performance.

Easy to use

- Reset your shaver very simply
- Change heads every 24 months for the best performance

Compatibility

- For shavers series 8000, 9000 and 9000 Prestige

Performance

- Skin-level closeness

Sustainability

- Recyclable packaging*

Highlights

NanoTech DualPrecision Blades



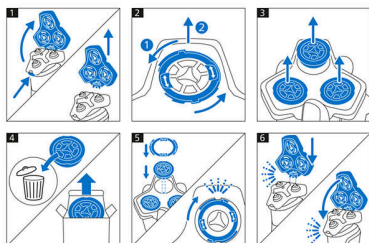
NanoTech DualPrecision blades shave close precisely at skin level (up to -0.08 mm below the skin), performing up to 165,000 cutting actions per minute. The 72 high-performance blades are self-sharpening and made in Europe.

Compatibility



Check the back of your shaver's handle to confirm replacement head. Need help? Visit philips.com/accessories

Simple replacement



1. Press the release buttons and detach the shaving head holder. 2. Turn the retaining rings counterclockwise and remove them. 3. Remove

old shaving heads and insert replacement (notches should fit exactly onto the projections). 4. Place retaining rings back and turn them clockwise until you hear a click. 5. Insert the shaving holder back and close.

Reset your shaver to new



Replace the shaver heads every 24 months to ensure best performance on your device.

Recyclable packaging*



At Philips we strive for sustainability in all aspects of product development. This packaging comes without plastic parts and is fully recyclable*.

Specifications

Shaving heads

Fits product type: Shaver series 8000, Shaver series 9000, Shaver series 9000 Prestige
Shaving heads per packaging: 3

Consumer Trade Item

Height: 10.8 cm
Width: 2.4 cm
Length: 9.9 cm
Net weight: 0.00877 kg
Gross weight: 0.03177 kg
GTIN: 8710103979104
Country of origin: NL
Harmonized system code: 85109000

Outer Carton

Height: 11.7 cm
Width: 8.1 cm
Length: 10.5 cm
Net weight: 0.02633 kg
Gross weight: 0.12293 kg
GTIN: 18710103979101

Pallet Layer

Height: 11.7 cm
Width: 100 cm
Length: 120 cm

