

# PHILIPS

## Curling iron

SalonCurl Pro

2.5 cm (1")

HP4683/00



## Perfect bouncy curls and waves

### SalonCurl Pro

The SalonCurl Pro features a ceramic 25mm curling tong and adjustable digital settings so you can create beautifully shiny curly looks in minutes. Once you've styled, simply set and go.

#### Ease of use

- Cool tip for easier and safer use
- Swivel cord to prevent tangled wires
- Automatic shut-off after 60 min
- Safety stand for easy use
- Key lock for ease of use
- 1.8 m power cord
- Universal voltage

#### Beautifully styled hair

- Protective ceramic coating
- Digital heat settings to ensure super smooth results
- 210°C professional high heat for perfect salon results
- 25mm tong for beautiful curls and waves

#### Time saving

- Instant heat: ready to use within 15 seconds

# Highlights

## Gentle on your hair



Protective ceramic coating ensures even heat distribution and less hair damage for shiny and soft hair.

## Digital heat settings

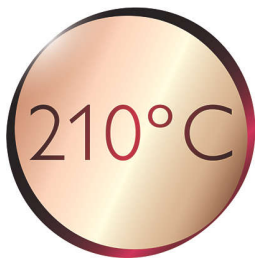


Digital heat settings make it easy to quickly choose the function you need or adjust the styling temperature using the digital display. This enables you to select the perfect temperature for your specific hair and needs. The result is perfect styling at the touch of a button.

## 25mm tong

If you want to create beautiful curls or waves, you need a curling iron with a medium sized diameter. 25 mm is the perfect size for creating fashionable curls and waves. Truly the professional's choice.

## 210°C professional temperature



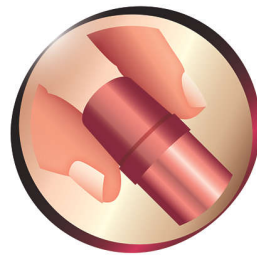
This high temperature enables you change the shape of your hair, and gives you that perfect look like you've just come from the salon.

## Instant heat



Now more waiting around for your styler to heat up, this allows you to switch on and get styling.

## Cool tip



The tip of the styler is made from a special heat insulating material to keep it cool; you can safely hold it while you're styling for optimal ease of use.

## Swivel cord



Useful swivel cord technology rotates the cord to prevent tangled wires.

## Safe usage

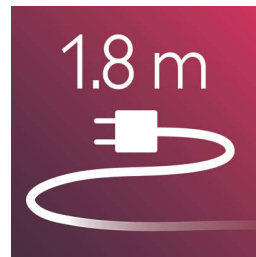


Some hair straighteners and curling irons have been equipped with an automatic shut-off feature. This feature has been designed to provide peace of mind. If left on, the appliance will automatically switch off after 60 min.

## Safety stand

The safety stand enables you to put the curler down safely during use.

## 1.8 m cord



1.8 m power cord

## Key lock

This enables you to lock the styler on your chosen temperature, so accidental switching is a thing of the past!

## Universal voltage



Worldwide voltage for getting the perfect travel companion

# Specifications

## Technical specifications

Voltage: 220-240 V

Cord length: 2,5 m

Wattage: 50 W

## Serviceability

Replacement

