

Philips Shaver series 7000  
SensioTouch  
Shaving unit

#### DualPrecision blades

Replacement unit  
Fits SensioTouch 2D (RQ11xx)

RQ11/51



## Keep a close shave

Change heads every 2 years for best results

Within two years your shaver heads cut 9 million hairs on your face. Replace the shaver heads and get back to 100% performance.

#### **Follows the unique contours of your face**

- GyroFlex 2D system adjusts easily to the curve

#### **Compatibility**

- Replacement heads for SensioTouch 2D shavers

#### **Sensationally smooth shave**

- Shavers with Super Lift&Cut Action

#### **An electric shaver which takes care of your skin**

- Aquatec seal for comfortable dry & refreshing wet shaves
- Smooth, low-friction SkinGlide to minimize irritation

#### **Simple replacement**

- Easy click off, click on

# PHILIPS

# Highlights

## Compatible with SensoTouch 2D



RQ11 replacement heads is compatible with SensoTouch 2D (RQ11xx) shavers.

## GyroFlex 2D



GyroFlex 2D contour-following system of the shaver adjusts easily to the curves of your face, minimizing pressure and irritation for a close shave.

## Super Lift & Cut Action



The dual blade system built into the Philips electric shaver lifts hairs to cut comfortably below skin level for a closer shave.

## Aquatec

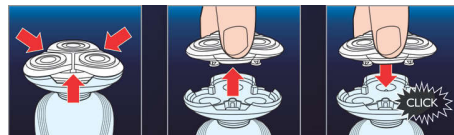
The Aquatec wet & dry seal of the electric shaver lets you choose how you prefer to shave. You can get a comfortable dry shave or a refreshing wet shave using a shaving gel or foam for extra skin comfort.

## SkinGlide



The low-friction SkinGlide shaving surface of the electric shaver slides smoothly along your skin for a close easy shave.

## Easy click off, click on



Simply pop the head of your Philips shaver open and use the included cleaning brush to sweep away the loose hairs.

# Specifications

## Shaving heads

- Fits product type: SensoTouch 2D (RQ11xx)
- Shaving units per packaging: 1



Issue date 2022-06-25

Version: 11.1.1

© 2022 Koninklijke Philips N.V.  
All Rights reserved.

Specifications are subject to change without notice.  
Trademarks are the property of Koninklijke Philips N.V.  
or their respective owners.

[www.philips.com](http://www.philips.com)