

# PHILIPS



## Hair Dryer

### 5000 Series

2300W

ThermoShield technology

4x ionic care\*

3 heat & 2 speed settings



BHD510/00

## Fast drying with no heat damage\*\*

with ThermoShield technology

ThermoShield technology gives you ultimate protection from heat damage, by actively controlling the air temperature of the dryer to an optimum level.

#### Beautifully styled hair

- Precise control with 6 heat and speed settings
- Cool Shot to set your style
- Slim nozzle for touch-ups and detailed styling

#### Care and protect

- A powerful motor creates air speeds of up to 110 km/h\*\*\*\*
- 4x ionic care\* for shiny, frizz-free hair

#### Powerful drying

- 20%\*\*\* faster drying with a powerful 2300W airflow

#### ThermoShield technology

- ThermoShield technology for ultimate heat protection

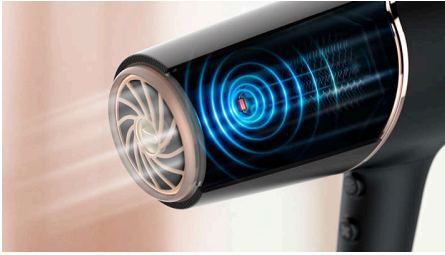
## 5000 Series

Hair Dryer

BHD510/00

# Highlights

### ThermoShield technology



The overheat detect sensor actively optimizes and controls the air temperature, protecting your hair from damage\*\* caused by overheating. Enjoy a stress-free drying experience with ThermoShield technology.

### 20%\*\*\* faster drying



A more powerful airflow of 2300W makes drying 20%\*\* faster, while still protecting your hair.

### 110 km/h air speed\*\*\*\*



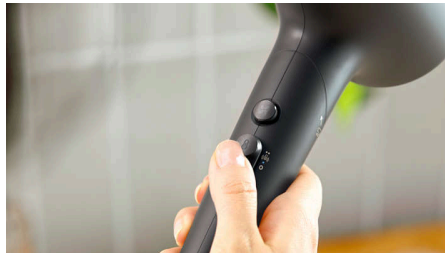
This hairdryer's high-performance motor has been developed for the professional market. It generates an air speed of up to 110 km/h\*\*\*\*, for fast drying and impressive styling.

### 4x ionic care\*



This ultra-powerful ionic system emits up to 80 million ions per drying session, creating frizz-free, shiny hair.

### 6 heat and speed settings



Easily pick the combination of heat and speed that works best for your hair and style. Six different settings ensure precise control for tailored styling.

### Cool Shot



The Cool Shot button provides an intense burst of cool air. It is used after styling to finish and set the style.

### 11 mm styling nozzle



The slim nozzle precisely focuses the air, for quick touch-ups and perfecting small details of your style.

## 5000 Series

Hair Dryer

BHD510/00

# Specifications

### Attachments

Nozzle: 11 mm  
Volume diffuser

### Technical specifications

Cord length: 1.8 m  
Voltage: 220-240 V  
Wattage: 2300 W

Motor: DC

Color / Finishing: Blue & Metallic  
Off mode power: < 0.3 W

### Features

Storage hook  
Heat/Speed settings: 6  
Cool shot

### Service

2-year worldwide warranty

### Caring technologies

4x Ion technology: \*  
ThermoShield technology

© 2025 Koninklijke Philips N.V.  
All Rights reserved.

Issue date 2025-04-15  
Version: 2.2.1

Specifications are subject to change without notice. Trademarks are the property of Koninklijke Philips N.V. or their respective owners.

EAN: 87 10103 94883 4

[www.philips.com](http://www.philips.com)



\* vs. BHD350 in top setting  
\*\* ThermoShield setting  
\*\*\* vs. basic dryer  
\*\*\*\* Tested in Philips lab with nozzle in top setting