

# PHILIPS

## Hairdryer

EssentialCare

1800W

Cool shot

Diffuser

220-240V

BHD004/03

## Powerful drying with a pleasant\* sound

Designed by Philips sound experts

This Philips EssentialCare dryer gives you the power and care you need with a more pleasant sound. Now you can enjoy a powerful and comfortable experience. \*Tested with 75 women in France 2014

### Easy to use

- Compact design for easy handling
- 1.8m cord for maximum flexibility
- Easy storage hook for convenient storage
- Narrow concentrator for focused airflow
- Designed for a pleasant sound

### Beautifully styled hair

- 1800W for perfect drying results
- 3 flexible speed settings for gentle drying
- Cool Shot sets your style
- Adds volume, maximizes thickness, curls and bouncy styles
- ThermoProtect temperature setting

# Highlights

## Pleasant sound



The design of the air inlet grill allows for increased air flow while, the shape and size of the dryer improves flow of the air through the dryer. The result is faster, more effective drying power with a pleasant sound\*. Now you can enjoy a powerful and comfortable experience.  
\*Tested with 75 women in France 2014.

## Compact design



Compact and ergonomic, this hairdryer benefits from a clever modern design. The result is a dryer that is light and easy to handle yet small enough to store virtually anywhere.

## Narrow concentrator



The concentrator focuses the air flow of air for precision styling. Great for touch ups or to set your style.

## Easy storage hook



A rubberized hook can be found on the base of the handle. Use to store easily at home or if staying at a hotel.

## 1.8m cord



1.8m cord.

## 1800W for perfect drying



This 1800W hairdryer creates the perfect level of airflow and drying power, for beautiful results every day.

## ThermoProtect temperature



The ThermoProtect temperature setting maintains a constant caring drying temperature and gives additional protection

from overheating the hair. With the same powerful airflow, you can achieve great results in the most caring way.

## 3 flexible speed settings



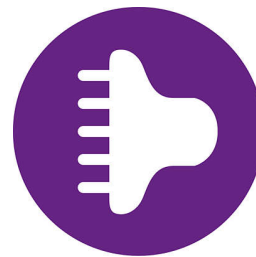
This hairdryer offers 3 pre-selected speed/heat combinations to make it quick and easy to achieve the perfect style.

## Cool Shot sets your style



A must-have professional setting, the Cool Shot provides a burst of cold air. Use after styling to set and finish your style.

## Volume diffuser



The volume diffuser spreads the flow of air across the hair, boosting volume and reducing frizz while drying. For best results, hold the diffuser close to the crown and root area. The diffuser's fine textured pins will add volume, maximize thickness, bounce and help shape curls.

# Specifications

## Weight & dimensions

A-Box Dimensions: 594 x 343 x 206mm

A-Box Weight: 600g

Product size: 274 x 88 x 179mm

F-Box weight: 125g

Product weight (excl. pack): 485g

## Technical specifications

Cord length: 1.8 m

Power: 1800 W

Color/finishing: PC high gloss and matt

Voltage: 220-240 V

Frequency: 50-60 Hz

Wattage: 1800 W

Motor: DC Motor

## Features

Foldable handle: No

Hanging loop

Diffuser

Dual voltage: No

Travel pouch: No

Ion conditioning: No

Number of attachments: 2

Nozzle / Concentrator

Ceramic: No

Coolshot

## Service

2-year guarantee

