

PHILIPS

Multi-Styler

StyleCare

15+ styles in a box

15 attachments & accessories

Style Guide

OneClick Technology

BHH822/00



More styles on demand

15 attachments and style guide for various looks

Every day a different look! From to perfectly polished, straight, volumized, curly hair to updos and more, create more than 15 styles with the new Philips Multi-Styler with style guide.

Ease of use

- Fast heat up time, ready to use in 45 sec
- Auto shut-off for safe usage
- 1.8 m power cord
- Swivel cord to prevent tangled wires
- OneClick Technology for quick and easy attachment changing
- 160°C to 210°C styling temperature settings
- LED indicator for styling with optimal temperature

Beautifully styled hair

- 25mm curling barrel for tight to loose curls
- 80mm straightener for sleek results
- Style guide and 11 useful hair accessories for 15+ styles
- 32mm hot brush for luxurious volume

Care for your hair

- Protective ceramic coating

Highlights

Straightener for sleek results



80mm straightening plates for perfect sleek results.

Curler for fabulous curls



25mm curling barrel for perfect tight to loose curls.

Hot brush for luxurious volume



Simply brush your hair for creating perfectly voluminous results.

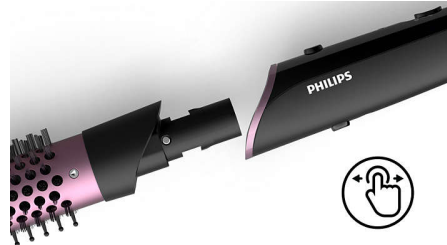
11 versatile hair accessories



Including a style guide and all accessories you need to create 15+ styles! The style kit includes 2 elastic bands, 4 elastic mini scrunchies, a hair

clip and 4 bobby pins, a comb and 2 spiral grips for easy hairstyling. A hair loop, pull hair pin, hair grip, banana clip and a side comb will enable you to experiment and create fabulous styles!

OneClick release technology



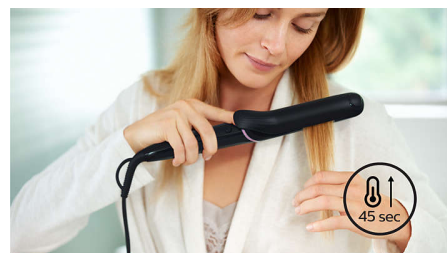
Changing attachments has never been quicker or easier with the multi-styler's OneClick design. Simply click on and push the button, holding the cool tip, to release.

2 temperature settings



2 temperature settings for perfect results. Choose from a professional high temperatures for straightening to achieve long lasting results while caring for your hair.

Fast heat up time



This styler has a fast heat up time, being ready to use in 45 seconds.

Ready to style indicator



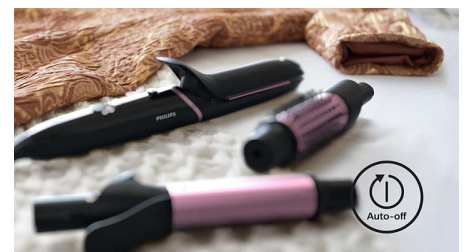
The ready to use indicator shows when the styler has reached the right temperature. The soft, white LED light changes from a soft pulse to constant to easily show when it's ready for use.

Gentle on your hair



Protective ceramic coating ensures even heat distribution and less hair damage for shiny and soft hair.

Auto shut-off



This styler has been equipped with an automatic shut-off feature. This feature has been designed to provide peace of mind. If left on, the appliance will automatically switch off after 60 min.

Specifications

Technical specifications

Heat-up time: 45 sec

Voltage: 110-240V

Plate size: Curler 90 mm, Heated brush 90 mm

Heater type: PTC

Heat settings: 2

Cable length: 1.8 m

Styling temperature: 180°C - 210°C

Accessories

Comb

Hair clips

Elastic band: 2

Hair loop

Style guide: with 15 easy to create styles

Banana clip

Elastic mini scrunchy: 4

Hair grip

Hair pins: 4

Pull hair pin

Side comb

Spiral grip: 2

Features

Cool tip

Swivel cord

Barrel diameter: Curler 25 mm

Coating of heated parts: Ceramic

Storage hook

OneClick release technology

Barrel diameter: Heated brush 32mm

Straightener size: 30x80 mm

Attachments

Curler

Straightener

Hot brush

Service

2-year worldwide guarantee

