



Philips
Deep-fat fryer

1000 g

HD6110

Crispy fried food easily

Easy to use and clean

With 1900 Watts of power, the Philips deep-fat fryer produces great results quickly. It's easy to clean thanks to the detachable dishwasher-proof lid and frying basket, and has an integrated spout for neat oil pouring.

Safe to use

- The outside of the fryer stays cool and safe to touch
- Automatic lid release at the touch of a button

Easy oil removal

- Integrated pouring spout for neat oil pouring

Quick and easy cleaning

- The frying basket and detachable lid are dishwasher

Easy to experience

- The collapsible frying basket is easy to store
- The dishwasher filter reduces unwanted frying smells
- Cord storage

PHILIPS

Deep-fat fryer
1000 g

Highlights

Dishwashable parts



The frying basket and detachable lid are dishwasherable

Filter

The dishwasherable filter reduces unwanted frying smells

Collapsible frying basket

The collapsible frying basket is easy to store

Coolwall exterior



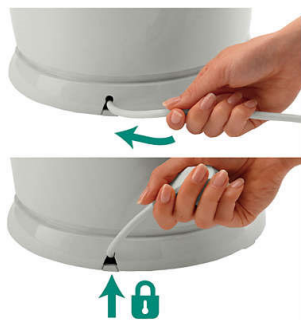
The outside of the fryer stays cool and safe to touch

Integrated pouring spout



Facilitates neat oil pouring for easy oil removal.

Cord storage



Cord storage keeps kitchen surface neat and tidy.

Automatic lid release



Automatic lid release at the touch of a button

HD6110/10

Specifications

Technical specifications

- Power: 1900 W
- Cord length: 1 m
- Voltage: 220-240 V
- Frequency: 50/60 Hz
- Capacity: 1000 g
- Oil content: 2 L

General specifications

- Non-slip feet
- Adjustable thermostat: 150-190 °C
- Handgrips

Design specifications

- Materials: Plastic (PP)
- Color(s): White with light green
- Dimensions (L x W x H): 300 x 255 x 380 mm
- Weight appliance: 2.8 kg

General specifications

- Power-on light



Issue date 2022-06-24

Version: 1.1.1

© 2022 Koninklijke Philips N.V.
All Rights reserved.

Specifications are subject to change without notice.
Trademarks are the property of Koninklijke Philips N.V.
or their respective owners.

www.philips.com