

# PHILIPS

## Wet & Dry epilator

### Satinelle Prestige

For legs, body and face

Ceramic discs grip fine hairs

4 body care routines

+ 8 accessories



BRE650/50



## Our fastest epilation even on the finest of hairs 4 body care routines

Our fastest ever epilator has unique ceramic discs that rotate at a greater speed than ever before and firmly grip fine and short hairs. You can now smoothen your skin before and after epilating by treating all your different body areas.

### Easy and effortless usage

- Cordless wet and dry for use in bath or shower
- Opti-light helps you target and remove even trickiest hairs
- First epilator with S-shaped handle
- Award-winning design\*

### Exceptional results

- Extra wide epilator head
- Epilation head of unique ceramic material for better grip

### Personalized body and face care routines

- Body exfoliation brush removes dead skin cells
- Body massager to relax and for a radiant looking skin
- Facial area and delicate area cap to remove unwanted hairs
- Shaving head and trimming comb for a close shave
- Includes skin stretcher
- Includes massage cap

# Highlights

## Our fastest epilation ever



Our epilator head is unique in being made from a textured ceramic surface that gently extract even the finest hairs and those 4x shorter than wax. Now with faster disc rotation than ever before (2200RPM) for our fastest hair removal.

## Extra wide epilator head



Extra wide epilator head covers more skin with every stroke for faster hair removal.

## Award-winning design\*



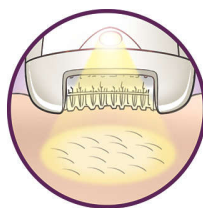
Award-winning design\* for effortless hair removal

## Cordless wet and dry usage



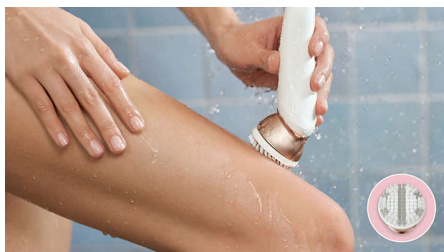
Designed with an anti-slip grip, ideal for use with water. Enables a more comfortable, gentle experience in your shower or bath. You can use it cordless for best convenience.

## Opti-Light



Opti-light helps you target and remove even trickiest hairs

## Body exfoliation brush



Our body exfoliation brush removes dead skin cells and helps to prevent ingrown hairs. The 48,200 hypo-allergenic, fine bristles gently yet effectively sweep away dead skin cells and stimulate the regeneration of the skin surface. This device will exfoliate your skin more effectively than manual treatment alone.

## Body massager



Our body massager gives you a relaxing treatment so you can enjoy radiant-looking skin.

## Shaving head and trimming comb



The shaving head provides a close shave and more gentleness in different body areas. It comes with a trimming comb to style your bikini area.

## Facial and delicate area cap



For more gentleness in all different body areas it includes a facial area cap to easily remove unwanted facial hairs and a delicate area cap for hair from underarm and bikini

# Specifications

## Accessories

**Pouch:** Basic pouch  
**Cleaning brush**  
**Body Exfoliation Brush**  
**Shaving head**  
**Body Massager**  
**Trimming comb**  
**Facial area cap**  
**Delicate area cap**  
**Massage cap**  
**Skin stretcher cap**

## Power

**Charging:** Rechargeable, 1.5 hour charging time  
**Battery Type:** Lithium-ion  
**Quick charge**  
**Usage time:** up to 40 minutes

## Technical specifications

**Number of catching points:** 32  
**Number of discs:** 17  
**Voltage:** 15V / 5.4W  
**Tweezing action speed 2:** 70400 per minute  
**Tweezing action speed 1:** 64000 per minute

## Features

**Speed settings:** 2 settings

## Ease of use

**Handle:** Ergonomic  
**Cordless**  
**Wet and dry use**  
**Opti-light**

## Performance

**Epilation discs:** Ceramic discs  
**Epilator head:** 30 mm, Extra wide  
**Epilation system:** Patented epilation system

