

# PHILIPS

## NORELCO

Replacement  
shaving heads

SH71 Blade Refill

Fits all S7000

Fits angular-shaped S5000

Not for rounded-shaped S5000

Fits S6600 & S6800

SH71/52



## Reboot your shave

Change heads every 12 months for like-new peak performance

Within two years, your shaver heads cut 9 million hairs on your face. Replace the shaver heads and get back to 100% performance.

### Easy to use

- Reset your shaver very simply
- Change heads every 24 months for the best performance

### Compatibility

- For shavers series 5000, 6000 angular shape and 7000 series

### Performance

- More cutting performance in every stroke

### Sustainability

- Recyclable packaging\*

## SH71 Blade Refill

Replacement shaving heads

SH71/52

# Highlights

### SteelPrecision Blades



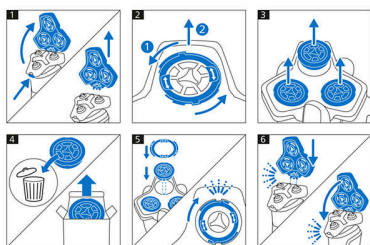
Powerful yet gentle, the 45 self-sharpening SteelPrecision blades on this Philips shaver perform up to 90,000 cutting actions per minute, cutting more hair per stroke for a clean, comfortable finish.

### Compatibility



Check the back of your shaver's handle to confirm replacement head. Need help? Visit [philips.com/accessories](https://philips.com/accessories)

### Simple replacement



1. Press the release buttons and detach the shaving head holder. 2. Turn the retaining rings counterclockwise and remove them. 3. Remove

old shaving heads and insert replacement (notches should fit exactly onto the projections).

4. Place retaining rings back and turn them clockwise until you hear a click. 5. Insert the shaving holder back and close.

### Reset your shaver to new



Replace the shaver heads every 24 months to ensure best performance of your device.

### Recyclable packaging\*



At Philips we strive for sustainability in all aspects of product development. This packaging comes without plastic parts and is fully recyclable\*.

# Specifications

### Shaving heads

**Fits product type:** Shaver series 7000 (S7xxx), Angular-shaped Series 5000

**Shaving heads per packaging:** 3

