



Philips  
Curler

20 mm tong  
Ceramic

HP4658

# Professional long-lasting styles

## SalonCurl Ceramic

Tight, loose, sculpted or bouncy. Get exactly the type of curls and waves you want with the SalonCurl Ceramic. A 20 mm barrel and professional ceramic coating sets this professional curler apart from the rest.

### **Ease of use**

- Ready for use indicator
- Cool tip for easier and safer use
- Swivel cord to prevent tangled wires
- On/off indication light
- Universal voltage
- Fast heat-up time, ready to use in 60 seconds
- 2.2 m power cord for maximum flexibility

### **Beautifully styled hair**

- 180°C temperature for beautiful results
- Slide on brush for added volume and beautiful waves
- 20 mm tong for beautiful curls

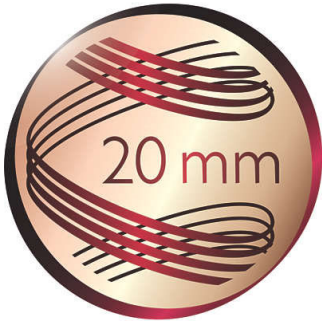
### **Less hair damage**

- Protective ceramic coating

# PHILIPS

# Highlights

## 20 mm tong



If you want to create beautiful curls, you need to use a curling iron with a medium sized diameter. 20 mm is the perfect size for creating fashionable wide curls and waves.

## Gentle on your hair



Protective ceramic coating ensures even heat distribution and less hair damage for shiny and soft hair.

## 180°C temperature



This high temperature enables you change the shape of your hair, and gives you that perfect look, as if you've just come from the salon.

## Slide-on brush



This attachment can be easily placed on tong to create additional volume and beautiful wavy styles.

## Cool tip



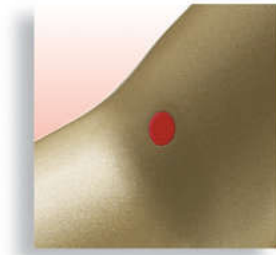
The tip of the styler is made from a special heat insulating material to keep it cool; you can safely hold it while you're styling for optimal ease of use.

## Instant heat up



The curler has a fast heat up time and is ready to use in 60 seconds.

## Ready for use indicator



Ready for use indicator: the dot turns white when ready for use

## On/off indication light



On/off indication light

## Swivel cord



Useful swivel cord technology rotates the cord to prevent tangled wires.

## 2.2 m power cord

2.2 m power cord for maximum flexibility

# Specifications

## Technical specifications

- Voltage: 110-240 V
- Colour/finishing: Dark purple and ceramic gold
- Barrel diameter: 20 mm
- Cord length: 2.2 m
- Heating time: 60s
- Maximum temperature: 180 °C
- Wattage: 25 W
- Material housing styler: PC S-2000
- Temperature range: one setting

## Features

- Ceramic coating: For protection and care

- Ready for use indicator: The dot changes colour at application temperature
- Cool tip: For safe use
- Swivel cord: For hassle-free use

## Hair type

- End result: Voluminous
- Hair length: Medium
- Hair thickness: Thin

## Service

- 2-year worldwide guarantee



Issue date 2022-06-21

Version: 5.0.1

© 2022 Koninklijke Philips N.V.  
All Rights reserved.

Specifications are subject to change without notice.  
Trademarks are the property of Koninklijke Philips N.V.  
or their respective owners.

[www.philips.com](http://www.philips.com)