

# PHILIPS

IPL Hair removal device

Lumea IPL 7000 Series

5 manual intensity settings

1 attachment: body

Lumea IPL App

Corded use



SC1994/00



## Great results, great value

Enjoy 12 months of hair reduction\*

Get hair-free smooth skin with our Lumea IPL 7000 Series. Treatments are gentle and effective with attachments for each body area.

### Gentle and effective for long-lasting smooth skin

- Treat only 2x a month for fast results
- Developed with dermatologists to be easy and effective
- Extra-long cable for added flexibility while treating

### Full solution for face and body

- 1 attachment for body
- Suitable for a wide range of skin tones and hair colors

### Personalized IPL hair removal treatment

- Skin Tone Sensor and 5 intensity settings
- Optimize your routine with the Philips Lumea IPL app

# Highlights

## 2x a month for fast results



Every 2 weeks to get started — that's half as many treatments as other brands. Followed by touch-ups just once a month. That's it. Covering both lower legs takes 15 minutes.

## Skin Tone Sensor



Choose from 5 intensity settings for a comfortable experience. The Skin Tone Sensor prevents you from treating areas of your skin that are too dark for IPL treatment.

## Extra-long cable



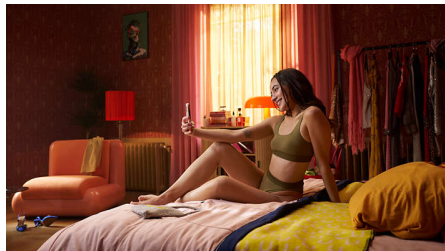
Convenient to use thanks to an extra long cable for easy access and enhanced maneuverability.

## 1 attachment for body



The body attachment can be used for gentle and effective treatment. The wide treatment window is perfect for quickly treating larger body areas like legs, arms and stomach.

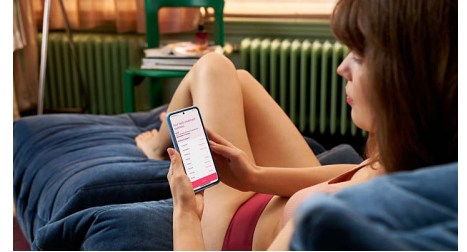
## Developed with dermatologists



As a leader in health technology, Philips developed Lumea IPL in consultation with dermatologists, for easy and effective use in

the safety of your home. Derived from technology used in professional salons, Lumea IPL offers gentle treatment, even on sensitive areas.

## Philips Lumea IPL app



Our free coaching app helps you plan and stick to your treatment schedule, then takes you through each session step by step. Downloaded by more than 2.1 million users.

## For many skin and hair types



IPL needs contrast between the pigment in the hair color and the pigment in the skin tone, therefore works on naturally dark blonde, brown and black hair and on skin tones from fair to medium brown (I-IV).

# Specifications

## Safety and adjustable settings

**Integrated UV filter:** Protects skin from UV light  
**5 light energy settings:** Adjustable to your skin type

**Integrated safety system:** Prevent unintentional flashing

## Application mode

**Slide and Flash:** For easy motion application

**Corded / cordless use:** Corded

**Stamp and Flash:** For treatment on small areas

## Technical specifications

**High performance lamp:** Built to last, 250,000 flashes, equivalent to 20 years of lamp lifetime\*\*

**Voltage:** 100-240 V

## Service

**Warranty:** 2 years global warranty + 1 extra year of warranty upon product registration within 90 days

## Items included

**Instructions for use:** User manual

**Storage:** Pouch

**Adapter:** 24V / 1500mA

## Application time

**Lower leg:** 15 min

**Underarms:** 2,5 min

**Bikini line:** 4 min

**Face areas:** 2 min

## Technical specs. attachments

**Body attachment:** Window size: 4.0 cm<sup>2</sup>, Treatment for body: legs, arms, stomach and underarms

