



Philips Steam&Go 2-in-1
Handheld garment steamer

1000 W

Heated plate
Automatic continuous steam
Brush



GC330/47

Quick crease removal with the power of steam

Ideal for delicate clothes and travel

This handheld garment steamer is ideal for last moment touch-ups and difficult-to-iron clothes. Easy-to-use and quick, it is the perfect addition to your iron. This model has a heated plate and a 2-in-1 function enabling horizontal and vertical steaming.

Easy to use

- Safe to use on delicate fabrics, like silk
- No ironing board needed
- Detachable water tank for easier filling
- Ergonomic design for handheld operation
- Fast heat-up time

Quick crease removal

- Automatic continuous steam delivered by electric pump
- Brush accessory for a smooth finish
- SmartFlow heated steam plate for great results
- 2-in-1: vertical and horizontal steaming function

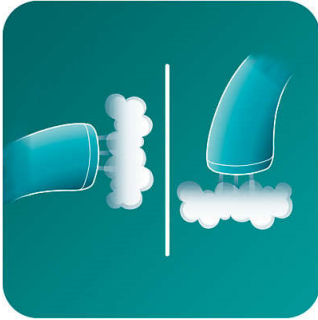
Refreshes clothes without washing or dry cleaning

- Removes cigarette, food and body odours
- Steam kills up to 99.9% of bacteria*

PHILIPS

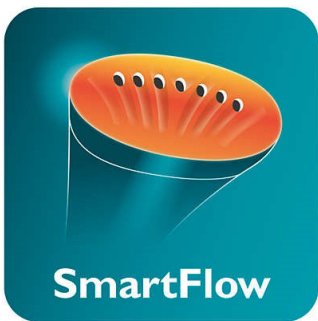
Highlights

2-in-1 steaming function



2-in-1 vertical and horizontal steaming function allows you to achieve even better results with your garment steamer. Steam your clothes vertically without using an ironing board or give them a really crisp touch by steaming horizontally on any straight surface around you. Due to its unique internal design this Steam&Go 2-in-1 will generate powerful continuous steam even in the horizontal position, so now you can also steam your soft furniture and bed linen.

SmartFlow heated plate



SmartFlow technology ensures great ironing results as the optimised steam flow heats up the steam plate. This keeps the steam plate at an optimal, safe temperature for all fabrics while effectively preventing wet spots. It features a coating that enables good gliding and corrosion resistance.

Automatic continuous steam



Electric pump provides continuous steam for easy and quick crease removal.

Safe on all garments



The steamer is safe to use on all fabrics. It is a great solution for delicate fabrics like silk.

No ironing board needed



By using the steamer you do not need an ironing board anymore, which makes ironing hassle-free.

Detachable water tank



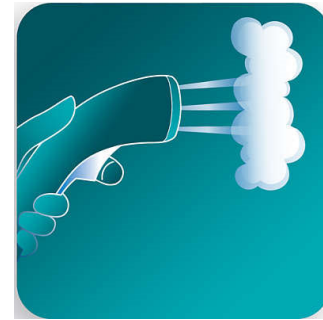
Detachable water tank for easier filling.

Fast heat-up time



The steamer is ready to use within seconds.

Ergonomic design



The handheld steamer is light and comfortable to use thanks to the ergonomic and compact design. Just press the trigger and quickly remove creases with continuous steam.

Specifications

Fast and powerful crease removal

- Continuous steam output: 20 g/min
- Power: 1000 W
- Vertical steaming
- SmartFlow steam plate
- Horizontal steaming

Easy to use

- Refill any time
- Water tank capacity: 60 ml
- Heat-up time: < 1 min
- Safe for all fabrics: Even for delicates such as silks
- Power cord length: 2 m

Weight and dimensions

- Weight of iron: 0.72 kg
- Product dimensions (W x H x D): 34.7 x 12.5 x 9.5 cm
- Packaging dimensions (W x H x D): 38 x 12 x 15 cm

Technical specifications

- Voltage: 220-240 V

Accessories

- Brush



Issue date 2022-06-21

Version: 1.0.2

EAN: 08 71010 37282 52

© 2022 Koninklijke Philips N.V.
All Rights reserved.

Specifications are subject to change without notice.
Trademarks are the property of Koninklijke Philips N.V.
or their respective owners.

www.philips.com

** Tested by external body for the following bacteria: Escherichia coli 8099, Staphylococcus aureus ATCC 6538, Candida albicans ATCC 10231 with 8 minutes' steaming time.