

# PHILIPS

Heated  
straightening brush

StyleCare Essential

Extra large brush area

ThermoProtect technology

Tourmaline ceramic coating



BHH880/03



## Naturally straight hair in 5 minutes\*

Smooth, shiny, frizz-free hair

Reveal naturally straight, beautifully shiny hair in just 5 minutes. Our ThermoProtect technology and bristle design work together for healthy looking, frizz-free hair.

### Ease of use

- Swivel cord
- Fast heat-up time
- 1.8m cord for maximum flexibility
- Large paddle-shaped brush
- Ready to use indicator light

### Care and protect

- Tourmaline ceramic coating
- ThermoProtect technology
- Triple bristle design
- 2 temperature settings to suit your hair type

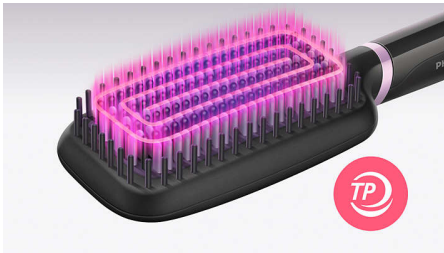
# Highlights

## Tourmaline ceramic coating



Tourmaline ceramic coating for shiny, smooth, frizz-free hair.

## ThermoProtect technology



ThermoProtect technology maintains constant temperature across the brush to prevent overheating for protected, healthy looking hair.

## 2 temperature settings

Two temperature settings (170°C & 200°C) to best suit your hair type.

## Triple bristle design



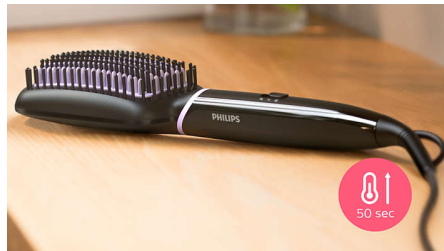
Triple bristle design gently detangles and straightens while protecting your scalp from heat.

## Paddle-shaped brush



The paddle-shaped design to straighten more hair in one go.

## Fast heat-up time



Ready to use in 50 seconds.

## Ready to use indicator light



LED light indicates when the brush is ready to use.

## 1.8m cord



1.8m cord.

## Swivel cord



Swivel cord for comfortable use.

# Specifications

## Technical specifications

**Cord length:** 1.8 m

**Voltage:** Universal V

**Heater type:** PTC

**Product size (mm):** 350 L x 75 W x 48 D

**Total number of bristles:** 247

**LED light indicator:** White color

## Features

**Temperature Settings:** 2 settings, 170°C and 200°C

**Auto shut-off:** after 60 min

**Brush shape:** Paddle

**Brushing area (mm):** 116 L x 60 W

**Number of heated bristles:** 111

## Ease of use

Storage hook

Swivel cord

## Service

2-year guarantee

## Caring technologies

ThermoProtect

Tourmaline ceramic coating

