

PHILIPS

Airstyler

EssentialCare

EssentialCare

Ionic



HP8662/03



Easy dry & style for shiny looks

Ionic care for a beautiful, shiny hair

Dry & style at once – the new Philips Essential Care airstyler allows you to dry and style your hair at once, whilst providing maximum care to your hair. Its 3 attachments really work, making it easy to create beautiful natural styles.

Easy to use

- Easy storage hook for convenient storage
- 2 years of worldwide guarantee
- 1.8 m cord for maximum flexibility
- Swivel cord to prevent tangled wires

Beautifully styled hair

- 800W styling power for salon-like results
- 38mm thermo brush to smoothen your hair
- Narrow concentrator for focused airflow
- Retractable bristle brush for easy curling
- Three flexible heat and speed settings for easy control

Prevent damage

- Best drying temperature with ThermoProtect temperature
- More care with ion conditioning for shiny, frizz-free hair
- Cool air setting for extra gentle drying

Highlights

Shine and condition



Ionic conditioning makes it possible to dry hair without static. Charged negative ions eliminate static hair, condition and smooth down the hair cuticles to intensify the hair's shine and glossiness. The result is smooth, frizz-free hair that shines beautifully.

ThermoProtect temperature



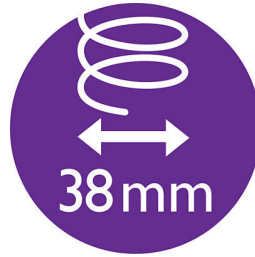
The ThermoProtect temperature provides the optimal drying temperature and gives additional protection from overheating the hair. With the same powerful airflow, you will get the best results in a caring way.

800W



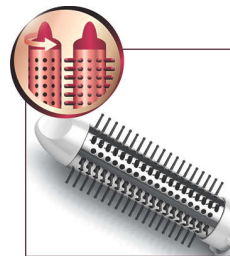
The Air Styler with 800W airflow for a gentle drying and styling. Achieve salon-like results every day.

38mm thermo brush



The thermo brush has an extra wide diameter of 38mm. The width of the barrel makes it the perfect styling tool for creating smooth styles and waves.

Retractable bristle brush



This easy to use airstyler is both a styling brush and curler in one. The bristles retract into the brush at the touch of a button, so you can easily slide the styler out of your hair. What's left is a beautiful bouncy curl.

Narrow concentrator

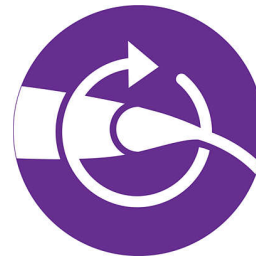
The concentrator of the hair dryer works by focusing the flow of air through the opening onto specific areas. This results in precise styling and is great for touch ups or to finish a hair style.

Cool air setting



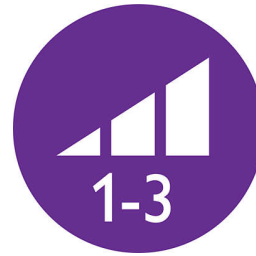
A cool air setting allows you to dry hair at relatively low temperature to minimize damage, which is suitable for especially fine, dry and damaged hair. And it is a perfect setting for the hot summer season!

Swivel cord



Useful swivel cord technology rotates the cord to prevent tangled wires.

Three flexible settings



The speed and heat required can be easily adjusted to create the perfect result. Three flexible settings ensure precise and tailored styling.

2 years guarantee



2 years of worldwide guarantee.

Specifications

Attachments

Retractable bristle brush: For waves and root volume

38mm Thermobrush: For smoothing and for waves

Nozzle: For a focused airflow

Power

Voltage: 220-240V

Wattage: 800W

Ease of use

Storage hook

Swivel cord

Caring technologies

Ion technology

ThermoProtect

