



Philips SalonDry Control  
Hairdryer

**2200W**

Ionic Care  
with Volume Diffuser  
CoolShot

**HP8182/00**

## Dry, Style and Set your hair your way

### SalonDry Control Hair dryer

Take control of your blow dry with the SalonDry Control hair dryer. 2200W of professional drying power, Ionic conditioning and multiple settings means great hair styles - from dry to set to style.

#### **Easy to use**

- Removable air inlet grill for easy cleaning
- 1.8 m power cord
- Easy storage hook for convenient storage

#### **Beautifully styled hair**

- Professional 2200W for perfect salon results
- Narrow concentrator for focused airflow
- Six flexible speed and temperature settings for full control
- Volume diffuser enhances volume, for curls and bouncy styles
- Cool Shot sets your style
- Dryer: With TurboBoost you dry faster, at the same heat

#### **Less Hair Damage**

- Ion conditioning for shiny, frizz free hair

**PHILIPS**

# Highlights

## Professional 2200W



This 2200W professional hairdryer creates a powerful airflow. The resulting combination of power and speed makes drying and styling your hair quicker and easier.

## Ionic conditioning



Give your hair an instant boost with ionic conditioning. Charged negative ions eliminate static, condition the hair and smooth down the hair cuticles to intensify the hair's shine and glossiness. The result is hair that is beautifully shiny, smooth and frizz-free.

## Six flexible speed settings



The speed and heat required can be easily adjusted to create the perfect style. Six

different settings ensure full control for precise and tailored styling.

## Cool Shot

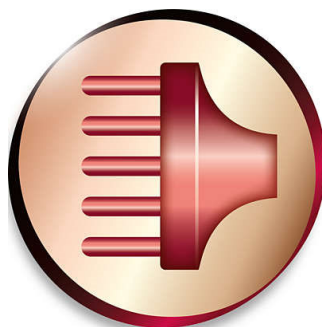


A must-have professional function for hair stylists. The Cool Shot button provides an intense burst of cold air. It is used after styling to finish and set the style.

## Narrow concentrator

The concentrator of the hair dryer works by focusing the flow of air through the opening onto specific areas. This results in precise styling and is great for touch ups or to finish a hair style.

## Volume diffuser



The volume diffuser dries hair healthily, reduces frizz and increases volume by spreading the airflow across the hair. It adds lift

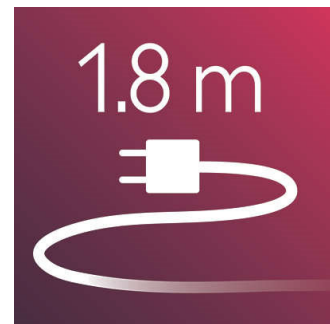
and maximises volume, especially when used on the crown and root area, making it perfect for creating curls and bouncy styles

## Easy storage hook



The rubberised hook is located at the base of the handle and provides another storage option, particularly convenient for use in the home or when staying at a hotel.

## 1.8 m cord



1.8 m power cord

## Removable air inlet grill

The air inlet grill of this hairdryer can be removed for cleaning. Remove and clean regularly to prevent build-up.

## TurboBoost

Dryer: With TurboBoost you dry faster, at the same heat

# Specifications

## Technical specifications

- Cord length: 1,8 m
- Wattage: 2200 W

## Features

- Cool shot
- Ion conditioning

## Service

- 2-year guarantee



Issue date 2022-06-25

Version: 8.2.1

© 2022 Koninklijke Philips N.V.  
All Rights reserved.

Specifications are subject to change without notice.  
Trademarks are the property of Koninklijke Philips N.V.  
or their respective owners.

[www.philips.com](http://www.philips.com)