

# PHILIPS

## Curler

SalonCurl Ceramic

Ceramic

20 mm tong

HP4658/00



## Create the curls you desire

### SalonCurl Ceramic curling iron

Tight, loose, sculpted or bouncy. Give your hair style exactly the type of curls and waves you want with the SalonCurl Ceramic. A 20mm barrel and professional ceramic coating sets this professional curling iron apart from the rest

#### Beautifully styled hair

- Slide on brush for added volume and beautiful waves
- 180°C temperature for beautiful results
- 20mm tong for beautiful curls

#### Ease of use

- Ready for use indicator
- Cool tip for easier and safer use
- Swivel cord to prevent tangled wires
- On/off indication light
- Universal voltage
- Fast heat up time, ready to use in 60 seconds
- 2.2 m power cord for maximum flexibility

#### Less hair damage

- Protective ceramic coating

# Highlights

### 20mm tong



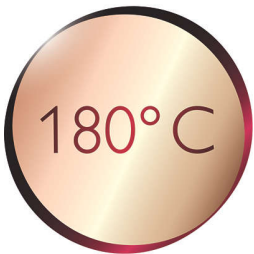
If you want to create beautiful curls, you need to use a curling iron with a medium sized diameter. 20 mm is the perfect size for creating fashionable wide curls and waves.

### Gentle on your hair



Protective ceramic coating ensures even heat distribution and less hair damage for shiny and soft hair.

### 180°C temperature



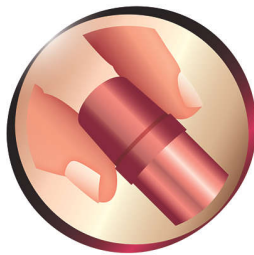
This high temperature enables you change the shape of your hair, and gives you that perfect look like you've just come from the salon.

### Slide-on brush



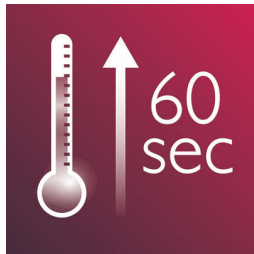
This attachment can be easily placed on tong to create additional volume and beautiful wavy styles.

### Cool tip



The tip of the styler is made from a special heat insulating material to keep it cool; you can safely hold it while you're styling for optimal ease of use.

### Instant heat up



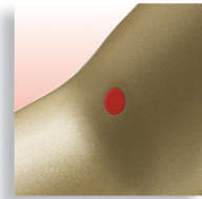
The curler has a fast heat up time, being ready to use in 60 seconds.

### On/off indication light



On/off indication light

### Ready for use indicator



Ready for use indicator: the dot turns white when ready for use

### Swivel cord



Useful swivel cord technology rotates the cord to prevent tangled wires.

### 2.2 m power cord

2.2 m power cord for maximum flexibility

### Universal voltage



Worldwide voltage for getting the perfect travel companion

# Specifications

## Technical specifications

**Color/finishing:** dark purple and gold

**Heating time:** 60s

**Cord length:** 2.2 m

**Barrel diameter:** 20 mm

**Maximum temperature:** 180 °C

**Voltage:** worldwide

**Heater type:** PTC ceramic heater

**Temperature range:** one setting

## Features

**Ceramic coating**

**Ready for use indicator**

**Cool tip**

**Swivel cord**

**Hanging loop**

## Hair type

**End result:** Tight and bouncy curls

**Hair thickness:** Thin, Medium, Thick

**Hair length:** Medium, Long

## Service

**2-year worldwide guarantee**

