

Philips
Straightener

180°C
Ceramic
IonBoost

HP4638/00



Let it shine!

SalonStraight Active Ion

Release your hair's shine potential. Shiny, glossy hair looks it's best when straightened with the Philips SalonStraight Active Ion. Ionic conditioning, Ceramic plates and professional styling temperature ensure beautiful results.

Ease of use

- Swivel cord to prevent tangled wires
- Dual voltage for worldwide use
- Easy lock for convenient storage
- On/off indication light
- On/off switch
- 1.8 m power cord

Beautifully styled hair

- 180°C temperature for beautiful results
- Ceramic plates for smooth gliding and shiny hair

Less hair damage

- EHD+ technology for more protection and shinier results
- Ion conditioning for shiny, frizz free hair

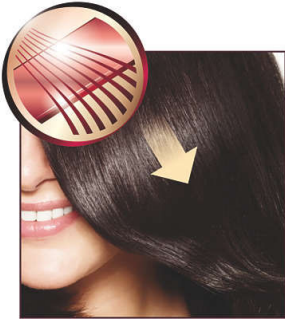
Time saving

- Extra wide plates for better results with thick or long hair

PHILIPS

Highlights

Ceramic plates



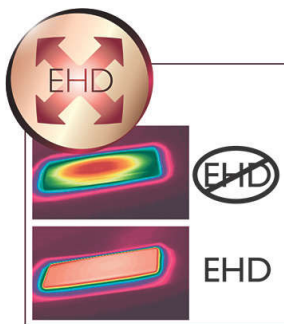
Ceramic is microscopically smooth and durable by nature and it is one of the best materials for straightening plates. The plates glide effortlessly through your hair, giving you perfect shiny hair.

180°C temperature



This high temperature enables you change the shape of your hair, and gives you that perfect look like you've just come from the salon.

EHD+ technology



Advanced Philips EHD+ technology means that your styler will always distribute the heat very evenly - even at high temperatures, and prevents damaging hot spots. This gives added protection and thus helps to keep your hair healthy and shiny.

Ion conditioning



Give your hair an instant boost with ionic conditioning. Charged negative ions eliminate static, condition the hair and smooth down the hair cuticles to intensify the hair's shine and glossiness. The result is hair that is beautifully shiny, smooth and frizz-free.

Wide plates



These extra wide straightening plates have been designed specifically for thick or long hair. The increased plate width can straighten more hair in one go and will help to reduce the time taken.

On/off switch

On/off switch

Swivel cord



Useful swivel cord technology rotates the cord to prevent tangled wires.

Easy lock



The straightener has an easy lock mechanism. Located at the base of the straightener, this flip lock makes storage quick and easy and will help to protect the straightener from accidental damage.

Dual voltage



Dual voltage for worldwide use

On/off indication light



On/off indication light

Specifications

Technical specifications

- Color/finishing: black
- Power: 29-32 W
- Cord length: 1,8 m
- Voltage: 110-127/220-240 V
- Material housing styler: PET

Hair type

- Current hair style: Straight, Curly, Wavy

- End result: Straight
- Hair thickness: Thick, Thin
- Hair length: Long, Medium
- For fragile hair

Serviceability

- Replacement



Issue date 2022-06-25

Version: 7.1.1

© 2022 Koninklijke Philips N.V.
All Rights reserved.

Specifications are subject to change without notice.
Trademarks are the property of Koninklijke Philips N.V.
or their respective owners.

www.philips.com