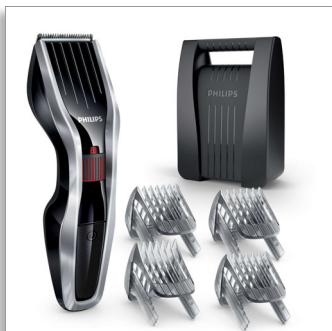




Philips Hairclipper series  
5000  
Hair clipper

**Stainless steel blades**

24 length settings  
75mins cordless use/8h charge  
3 beard combs and case



HC5440/83

## HAIRCLIPPER Series 5000 - Cuts twice as fast\*

with DualCut technology for a faster, sharper cut

The HAIRCLIPPER Series 5000 is built to last, and engineered to perform. The innovative cutting element, stainless steel blades and adjustable beard and hair combs are designed to give you a fast, sharp cut, time after time.

**Easy to use**

- 'Quick release' blades for easy cleaning
- 75 minutes of cordless use after an 8-hour charge

**Performance**

- Self-sharpening steel blades for long-lasting sharpness

**Precise length control**

- Easy to select and lock in 24 length settings: 0.5 to 23mm

# PHILIPS

## Hair clipper

Stainless steel blades 24 length settings, 75mins cordless use/8h charge, 3 beard combs and case

# Specifications

### Cutting system

- Cutting element: Stainless steel blades
- Cutter width: 41 mm
- Number of length settings: 24
- Range of length settings: From 0.5 to 23 mm
- Precision (size of steps): By 1 mm
- Precision beard comb: 1.5mm comb, 3mm comb, 5mm comb

### Ease of use

- Maintenance free: No oil needed
- Cleaning: Washable blades



### Power system

- Charging time: 8 hour(s)
- Battery type: Ni-MH
- Operation: Corded and cordless
- Running time: 75 minutes

### Service

- 2-year worldwide guarantee: Yes, Plus 3-years with registration

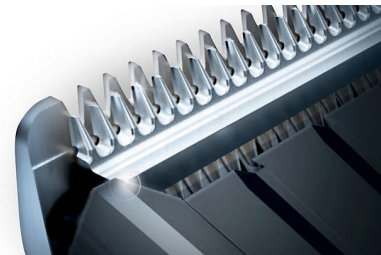
### Storage

- Case: Hard case

HC5440/83

# Highlights

### Stainless steel blades



Self-sharpening stainless steel blades for long-lasting sharpness.

### 24 lock-in length settings



Turn the zoom wheel to simply select and lock in the length you want, with 23 length settings from 1 to 23mm, and precisely 1mm between each length. Or you can use it without the comb for a close 0.5mm trim.

### Corded & powerful cordless use



Use the clipper corded or cordless for maximum power and freedom, with 75 minutes of cordless power after 8 hours of charging.

### Easy to clean



Simply click open the detachable head to quickly release and wash the blades.



Issue date 2022-06-17

Version: 10.0.1

© 2022 Koninklijke Philips N.V.  
All Rights reserved.

Specifications are subject to change without notice.  
Trademarks are the property of Koninklijke Philips N.V.  
or their respective owners.

[www.philips.com](http://www.philips.com)

\* Versus its Philips predecessor