



Philips SalonDry Control  
Hairdryer

2100W

HP4983/00

## The dryer that gives the results you want

### SalonDry Control

Take control of your blow dry with the SalonDry Control. 2100W of professional drying power, Ionic conditioning and multiple settings means great results – from dry to set to style.

#### Easy to use

- Removable air inlet grill for easy cleaning
- 1.8 m power cord

#### Beautifully styled hair

- Six flexible speed and temperature settings for full control
- Narrow concentrator for focused airflow
- Volume diffuser enhances volume, for curls and bouncy styles
- Professional 2100W for perfect salon results

#### Less Hair Damage

- Ion conditioning for shiny, frizz free hair

#### Long lasting styles

- Cool Shot sets your style

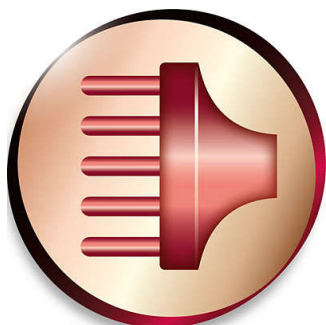
#### Time saving

- TurboBoost lets you dry faster without additional heat

# PHILIPS

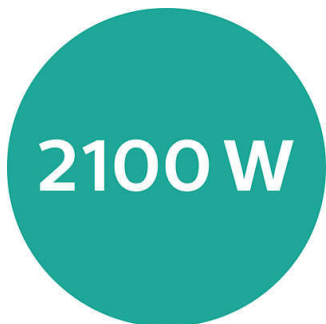
# Highlights

## Volume diffuser



The volume diffuser dries hair healthily, reduces frizz and increases volume by spreading the airflow across the hair. It adds lift and maximises volume, especially when used on the crown and root area, making it perfect for creating curls and bouncy styles

## Professional 2100W



This 2100W professional hairdryer creates a powerful airflow. The resulting combination of power and speed makes drying and styling your hair quicker and easier.

## Six flexible speed settings



The speed and heat required can be easily adjusted to create the perfect style. Six different settings ensure full control for precise and tailored styling.

## Narrow concentrator

The concentrator of the hair dryer works by focusing the flow of air through the opening onto specific areas. This results in precise styling and is great for touch ups or to finish a hair style.

## Ion conditioning



Give your hair an instant boost with ionic conditioning. Charged negative ions eliminate

static, condition the hair and smooth down the hair cuticles to intensify the hair's shine and glossiness. The result is hair that is beautifully shiny, smooth and frizz-free.

## TurboBoost

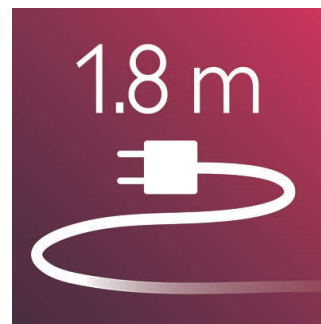
The special TurboBoost feature has been designed to quickly dry yet protect the hair by providing powerful drying without the need for increased temperature.

## Cool Shot



A must-have professional function for hair stylists. The Cool Shot button provides an intense burst of cold air. It is used after styling to finish and set the style.

## 1.8 m cord



1.8 m power cord

## Removable air inlet grill

The air inlet grill of this hairdryer can be removed for cleaning. Remove and clean regularly to prevent build-up.

# Specifications

## Technical specifications

- Power: 2100 W
- Voltage: 220-240 V
- Cord length: 2,0 m
- Material housing styler: ABS

## Weight and dimensions

- A-box dimensions: 630x375x261 mm
- F-box dimensions: 310x120x240 mm
- Number of F-boxes in A-box: 6
- F-box weight (including product): 1010 g
- Weight of net product incl. attachments: 657 g
- A-box weight: 6980 g

## Pallet

- Quantity: 1200x800
- Number of layers: 7
- Number of A-boxes per layer: 3

## Serviceability

- Replacement

## Logistic data

- Country of origin: PRC
- 12NC code: 88449830001
- EAN F-box: See pacdoc for your country
- EAN A-box: See pacdoc for your country



Issue date 2022-06-25

Version: 5.1.1

© 2022 Koninklijke Philips N.V.  
All Rights reserved.

Specifications are subject to change without notice.  
Trademarks are the property of Koninklijke Philips N.V.  
or their respective owners.

[www.philips.com](http://www.philips.com)