

# PHILIPS

## Multi-Styler

HP4698/10



## More creative styles, constant care

### SalonSuper Stylist

Want to count the ways to get great styles? The SalonMultistylist 10 in 1 has ten versatile ceramic styling attachments. Perfect for creating all the styles you can think of...and more.

#### **Ease of use**

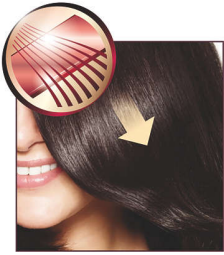
- Cool tip for easier and safer use
- Swivel cord to prevent tangled wires
- Automatic shut-off after 60 min
- On/off indication light
- 1.8 m power cord
- Included: hairclips for easy styling
- Heat resistant pouch

#### **Beautifully styled hair**

- Ceramic plates for smooth gliding and shiny hair
- 13 piece heatstyler set for unlimited versatility in styling
- Slide-on spiral for beautiful ringlets
- Large curling tong for big curls
- Small curling tong for tight curls and ringlets
- Slide on brush for added volume and beautiful waves

# Highlights

## Ceramic plates



Ceramic is microscopically smooth and durable by nature and it is one of the best materials for straightening plates. The plates glide effortlessly through your hair, giving you perfect shiny hair.

## 13 piece heatstyler set



Every hairstyle you can imagine is possible with the versatile styling tools. Be creative!

## Slide-on brush



This attachment can be easily placed on tong to create additional volume and beautiful wavy styles.

## Slide-on spiral

Just follow the curves to create the most beautiful ringlets, it has never been so easy!

## Small curling tong

If you want to create tight curls or ringlets, you need to use a curling iron with a small diameter.

## Large curling tong

If you want to create beautiful curls or waves, you need this large curling attachment with a large sized diameter.

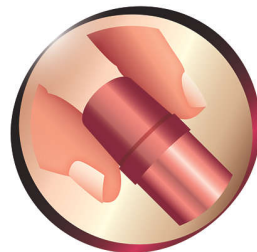
## Spiral curling tong

The defined spirals on the curling tong give you loose waves in an easy way.

## Hairclips

Use the hairclips to make sections, this will help you to style all your hairs easily.

## Cool tip



The tip of the styler is made from a special heat insulating material to keep it cool; you can safely hold it while you're styling for optimal ease of use.

## Swivel cord



Useful swivel cord technology rotates the cord to prevent tangled wires.

## Heat resistant pouch

This Heat Resistant pouch is perfect for styling on the go. Forget waiting for your styler to cool down. Simply store using the heat resistant pouch included.

## Safe usage



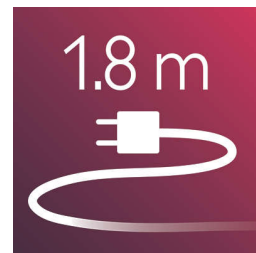
Some hair straighteners and curling irons have been equipped with an automatic shut-off feature. This feature has been designed to provide peace of mind. If left on, the appliance will automatically switch off after 60 min.

## On/off indication light



On/off indication light

## 1.8 m cord



1.8 m power cord

# Specifications

## Technical specifications

**Color/finishing:** various

**Power:** 25 W

**Cord length:** 1,8 m

**Voltage:** 100-240 V

**Material housing:** various

## Hair type

**Current hair style:** Straight, Wavy, Curly

**End result:** Multi-styles

**Hair thickness:** Thin

**Hair length:** Long, Medium

**For fragile hair**

## Serviceability

**Replacement**

