



Philips StyleCare Essential  
Heated straightening brush

**Extra large brush area**

ThermoProtect technology  
Tourmaline ceramic coating



BHH880/00

## Naturally straight hair in 5 minutes\*

Smooth, shiny, frizz-free hair

Reveal naturally straight, beautifully shiny hair in just 5 minutes. Our ThermoProtect technology and bristle design work together for healthy looking, frizz-free hair.

### **Ease of use**

- Swivel cord
- Fast heat-up time
- 1.8m cord for maximum flexibility
- Large paddle-shaped brush
- Ready to use indicator light

### **Care and protect**

- Tourmaline ceramic coating
- ThermoProtect technology
- Triple bristle design
- 2 temperature settings to suit your hair type

**PHILIPS**

Heated straightening brush  
Extra large brush area ThermoProtect technology, Tourmaline ceramic coating

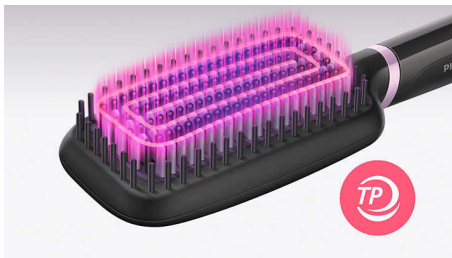
BHH880/00

# Highlights

## Tourmaline ceramic coating

Tourmaline ceramic coating for shiny, smooth, frizz-free hair.

## ThermoProtect technology



ThermoProtect technology maintains constant temperature across the brush to prevent overheating for protected, healthy looking hair.

## 2 temperature settings

Two temperature settings (170°C & 200°C) to best suit your hair type.

## Triple bristle design



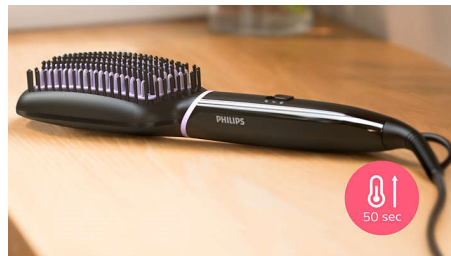
Triple bristle design gently detangles and straightens while protecting your scalp from heat.

## Paddle-shaped brush



The paddle-shaped design to straighten more hair in one go.

## Fast heat-up time



Ready to use in 50 seconds.

## Ready to use indicator light



LED light indicates when the brush is ready to use.

## 1.8m cord

1.8m cord.

## Swivel cord



Swivel cord for comfortable use.

# Specifications

## Technical specifications

- Cord length: 1.8 m
- Voltage: Universal V
- Heater type: PTC
- Product size (mm): 350 L x 75 W x 48 D
- Total number of bristles: 247
- LED light indicator: White color

## Features

- Temperature Settings: 2 settings, 170°C and 200°C
- Auto shut-off: after 60 min
- Brush shape: Paddle

- Brushing area (mm): 116 L x 60 W
- Number of heated bristles: 111

## Ease of use

- Storage hook
- Swivel cord

## Service

- 2-year guarantee

## Caring technologies

- ThermoProtect
- Tourmaline ceramic coating



Issue date 2022-06-20

Version: 5.5.1

© 2022 Koninklijke Philips N.V.  
All Rights reserved.

Specifications are subject to change without notice.  
Trademarks are the property of Koninklijke Philips N.V.  
or their respective owners.

[www.philips.com](http://www.philips.com)

\* Measured on 33 women with mid length hair. Test done in China.