

Philips SalonStraight  
Seduce  
Straightener

210°C  
Ceramic  
Straight & Curl

HP4668/03



## Long-lasting straight and curly styles

### SalonStraight Seduce

Now you style your hair with the professional temperature of 210°C. Combining this with ultra-smooth curved Ceramic Jade plates, gives you the freedom to create long-lasting straight styles or fashionable flicks and curls.

#### Ease of use

- Swivel cord to prevent tangled wires
- Dual voltage for worldwide use
- Easy lock for convenient storage
- Automatic shut-off after 60 min
- Ready to use indicator
- Easy storage hook for convenient storage
- 1.8 m power cord

#### Beautifully styled hair

- Digital heat settings to ensure super smooth results
- Ceramic plates for smooth gliding and shiny hair
- Rounded edges for perfect curls and beautiful waves
- 210°C professional high heat for perfect salon results

**PHILIPS**

# Highlights

## Ceramic plates



Ceramic is microscopically smooth and durable by nature and it is one of the best materials for straightening plates. The plates glide effortlessly through your hair, giving you perfect shiny hair.

## Digital heat settings

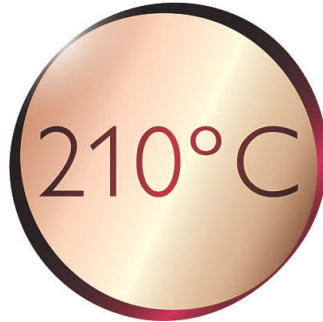


Digital heat settings make it easy to quickly choose the function you need or adjust the styling temperature using the digital display. This enables you to select the perfect temperature for your specific hair and needs. The result is perfect styling at the touch of a button.

## Rounded edges

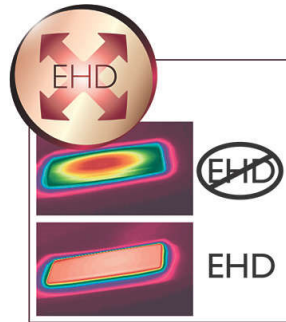
Ceramic plates with gentle rounded edges make creating flicks and curls easier than ever. Wrap the hair around the rounded edge, and simply pull the straightener down as you normally do.

## 210°C professional temperature



This high temperature enables you change the shape of your hair, and gives you that perfect look like you've just come from the salon.

## EHD+ technology



Advanced Philips EHD+ technology means that your styler will always distribute the heat very evenly - even at high temperatures, and prevents damaging hot spots. This gives added protection and thus helps to keep your hair healthy and shiny.

## Instant heat

Now more waiting around for your styler to heat up, this allows you to switch on and get styling.

## Easy storage hook



The rubberised hook is located at the base of the handle and provides another storage option, particularly convenient for use in the home or when staying at a hotel.

## Swivel cord



Useful swivel cord technology rotates the cord to prevent tangled wires.

## Easy lock



The straightener has an easy lock mechanism. Located at the base of the straightener, this flip lock makes storage quick and easy and will help to protect the straightener from accidental damage.

# Specifications

## Technical specifications

- Power: 45-65 W
- Cord length: 1,8 m
- Voltage: 110-240 V

## Hair type

- End result: Straight, Wavy

- Current hair style: Straight, Wavy, Curly
- Hair thickness: Thin, Thick
- Hair length: Long, Medium
- For fragile hair

## Serviceability

- Replacement



Issue date 2022-06-25

Version: 1.0.1

© 2022 Koninklijke Philips N.V.  
All Rights reserved.

Specifications are subject to change without notice.  
Trademarks are the property of Koninklijke Philips N.V.  
or their respective owners.

[www.philips.com](http://www.philips.com)