



Philips SalonDry Control  
Hairdryer

2100W

HP4983/03

## The dryer that gives the results you want

### SalonDry Control

Take control of your blow dry with the SalonDry Control. 2100W of professional drying power, Ionic conditioning and multiple settings means great results – from dry to set to style.

#### Easy to use

- Inlet grille can be opened for easy cleaning
- 6 heat/speed settings for full flexibility
- Long cord for maximum flexibility

#### Beautifully styled hair

- Narrow concentrator for precise styling
- Volume diffuser enhances volume, for curls and bouncy styles
- Professional 2100W for perfect salon results

#### Long lasting styles

- Cool shot sets your styles

#### Time saving

- Turbo boost for extra fast drying

#### Protection

- Ion conditioning for frizz-free, shiny hair

# PHILIPS

Hairdryer  
2100W

HP4983/03

# Highlights

## Ion conditioning



Streams of ions are generated that condition your hair and reduce frizz and static electricity, leaving your hair looking loft, smooth and shiny.

## Cool shot



The cool shot fixes your hairstyle and adds shine to it.

## Narrow concentrator



The narrow concentrator directs the airflow directly at the brush or comb for precise styling.

## Turbo boost



The turbo boost button increases the airflow, to dry your hair even quicker.

## Removable inlet grille



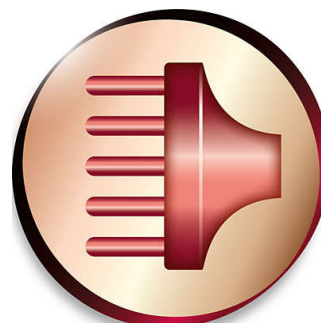
The air inlet grille can be opened for easy cleaning.

## 6 heat/speed settings



3 heat/2 speed settings give 6 possible settings to dry and pre-style your hair the way you like it.

## Volume diffuser

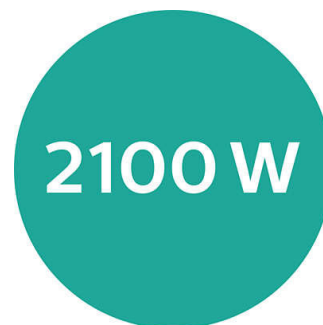


The volume diffuser dries hair healthily, reduces frizz and increases volume by spreading the airflow across the hair. It adds lift and maximises volume, especially when used on the crown and root area, making it perfect for creating curls and bouncy styles

## 2 m long cord

The long cord give you maximum flexibility.

## Professional 2100W



This 2100W professional hairdryer creates a powerful airflow. The resulting combination of power and speed makes drying and styling your hair quicker and easier.

# Specifications

## Technical specifications

- Power: 2100 W
- Cord length: 2,0 m
- Voltage: 220-240 V
- Material housing styler: ABS

## Weight and dimensions

- A-box dimensions: 630x375x261 mm
- F-box dimensions: 310x120x240 mm
- F-box weight (including product): 1010 g
- Weight of net product incl. attachments: 657 g
- Number of F-boxes in A-box: 6
- A-box weight: 6980 g

## Pallet

- Quantity: 1200x800
- Number of layers: 7
- Number of A-boxes per layer: 3

## Serviceability

- Replacement

## Logistic data

- Country of origin: PRC
- 12NC code: 88449830001
- EAN F-box: See pacdoc for your country
- EAN A-box: See pacdoc for your country



Issue date 2022-06-25

Version: 1.0.1

© 2022 Koninklijke Philips N.V.  
All Rights reserved.

Specifications are subject to change without notice.  
Trademarks are the property of Koninklijke Philips N.V.  
or their respective owners.

[www.philips.com](http://www.philips.com)