

PHILIPS

Hairdryer

SalonDry Pro

2100W

HP4990/00



The expert's secret weapon

SalonDry Pro

Want to dry your hair like the professionals? The SalonDry Pro – with 2100W of superior drying power – is the hairdryer you need if you're looking to recreate that salon style blow dry.

Easy to use

- Salon length 3m power cord for maximum flexibility

Beautifully styled hair

- Six flexible speed and temperature settings for full control
- Volume diffuser enhances volume, for curls and bouncy styles
- Professional 2100W for perfect salon results
- Professional style rocker switches for better control
- Ultra narrow concentrator for precise styling

Less Hair Damage

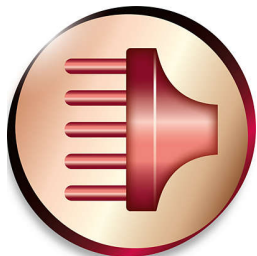
- Ceramic element to smooth your hair
- Ion conditioning for shiny, frizz free hair

Long lasting styles

- Cool Shot sets your style

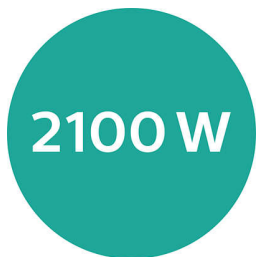
Highlights

Volume diffuser



The volume diffuser dries hair healthily, reduces frizz and increases volume by spreading the airflow across the hair. It adds lift and maximises volume, especially when used on the crown and root area, making it perfect for creating curls and bouncy styles

Professional 2100W



This 2100W professional hairdryer creates a powerful airflow. The resulting combination of power and speed makes drying and styling your hair quicker and easier.

Six flexible speed settings



The speed and heat required can be easily adjusted to create the perfect style. Six different settings ensure full control for precise and tailored styling.

Prof style rocker switches

A must-have professional function. These type of switches enable you to quickly choose the rights settings without any stress.

Ultra narrow concentrator 15mm

The concentrator works by directing the flow of air through the ultra narrow opening on to specific areas. This results in very precise styling and is great for touch ups or to finish a style.

Ceramic element



The ceramic element is included to prevent overdrying. It issues infrared heat, which has a gentle warmth which helps dries your hair from within and protects it from overdrying, without compromising on speed and effectiveness.

Ion conditioning



Give your hair an instant boost with ionic conditioning. Charged negative ions eliminate static, condition the hair and smooth down the hair cuticles to intensify the hair's shine and glossiness. The result is hair that is beautifully shiny, smooth and frizz-free.

Cool Shot



A must-have professional function for hair stylers. The Cool Shot button provides an intense burst of cold air. It is used after styling to finish and set the style.

3m cord

The longer length results in improved flexibility and ease of handling, so you can use it anywhere you want.

Specifications

Technical specifications

Power: 2100 W

Cord length: 3 m

Voltage: 220–240 V

Color/finishing: Pearl Luxury

Material housing styler: ABS/PC

Serviceability

Replacement

