



Philips DryCare Advanced
Hairdryer

ThermoProtect Ionic

2200W
2x more ions
Volume diffuser

BHD170/40

2 times more ions for shiny hair

with volume diffuser & 14mm styling nozzle.

Protect your hair while enjoying fast drying results. This hair dryer has multiple speed and temperature settings. Features ThermoProtect for fast drying at a constant caring temperature and Ionic Care for frizz-free shine.

Easy to use

- Easy storage hook for convenient storage
- 1.8 m power cord
- Removeable air flow filter makes cleaning quick and easy

Beautifully styled hair

- Professional 2200W for perfect salon results
- Cool Shot sets your style
- Adds volume, maximising thickness, curls and bouncy styles
- Six flexible speed and temperature settings for full control
- Perfect styling results with a slim styling nozzle

Less Hair Damage

- ThermoProtect temperature setting
- 2 times stronger Ion conditioning for ultimate shine

PHILIPS

Highlights

Cool Shot



A must-have professional function for hair stylists. The Cool Shot button provides an intense burst of cold air. It is used after styling to finish and set the style.

Easy storage hook



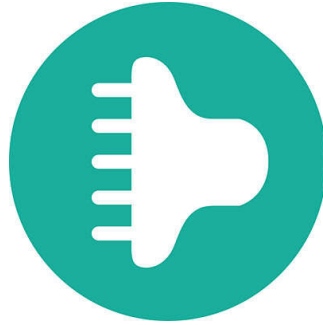
The rubberised hook is located at the base of the handle and provides another storage option, particularly convenient for use in the home or when staying at a hotel.

Professional 2200W



This 2200W professional hairdryer creates a powerful airflow. The resulting combination of power and speed makes drying and styling your hair quicker and easier.

Asymmetric volume diffuser

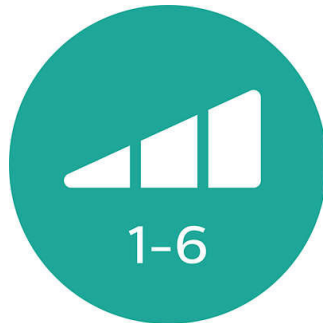


The volume diffuser has a unique asymmetric design that is contoured to the head, making it easier and more intuitive to use. The diffuser also spreads the flow of air across the hair, drying hair more healthy, boosting volume and reducing frizz. For best results, hold close to the crown and root area and let the diffuser's fine textured pins encourage volume, add bounce and shape curls.

Removeable air inlet filter

The removeable air flow filter of your hairdryer is easy to maintain. Simply click off to clean. Doing this regularly will prevent build up of dust and hair that can affect drying performance.

Speed and temperature settings



The speed and heat required can be easily adjusted to create the perfect style. Six different settings ensure full control for precise and tailored styling.

Slim styling nozzle

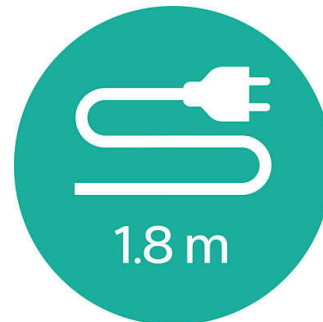


Perfect styling results and a shiny, polished look with a slim styling nozzle for precise styling.

Extra ionic care

Give your hair an intensive boost with ionic conditioning. This hairdryer emits 2 times more negatively charged ions than other hairdryers. The result is ultimate shiny, frizz-free hair. Let it shine!

1.8 m cord



Convenient to use thanks to the 1.8m power cord length.

Specifications

Technical specifications

- Cord length: 1.8 m
- Power: 2200 W
- Voltage: 220-240 V
- Color/finishing: High Gloss & Mat White
- Frequency: 50-60 Hz
- Wattage: 2200 W
- Motor: DC Motor
- Housing material: ABS

Features

- Ceramic coating: No
- Foldable handle: No
- Cool shot
- Diffuser: Asymmetric volume diffuser
- Dual voltage: No
- Travel pouch: No
- Hanging loop

- Ion conditioning
- Number of attachments: 2
- Nozzle / Concentrator: Slim styling 14mm nozzle

Weight & dimensions

- A-Box Dimensions: Length = 63cm, Width = 35cm, Height = 25cm
- A-Box Weight: 6.2kg
- Product size: Width = 22cm, Height = 31cm, Length = 10cm
- F-Box Dimensions: Depth = 11cm, Height = 23cm, Width = 31cm
- Product weight (excl. pack): 0.6kg
- F-Box weight: 0.9kg

Service

- 2-year guarantee



Issue date 2022-06-17

Version: 1.1.1

© 2022 Koninklijke Philips N.V.
All Rights reserved.

Specifications are subject to change without notice.
Trademarks are the property of Koninklijke Philips N.V.
or their respective owners.

www.philips.com