



Philips
Curler

32 mm barrel

210C professional temperature
Ceramic coating
Auto shut-off

HP4684/00

Perfect bouncy curls and waves

SalonCurl Pro Curling Iron

Get curling. The SalonCurl Pro is a curling iron with a 38mm barrel and ceramic tourmaline coating which ensures big bouncy curls and maximum shine

Ease of use

- Cool tip for easier and safer use
- Automatic shut-off after 60 min
- Safety stand for easy use
- 1.8 m power cord
- Universal voltage
- Fast heat up time, ready to use in 60 seconds

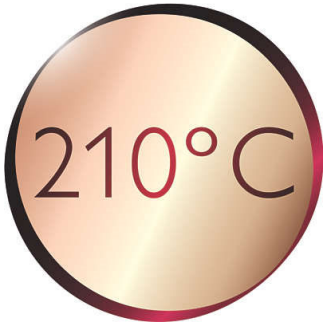
Beautifully styled hair

- 210°C professional high heat for perfect salon results

PHILIPS

Highlights

210°C professional temperature



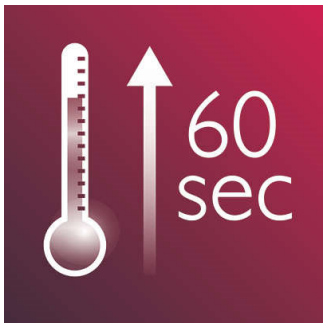
This high temperature enables you change the shape of your hair, and gives you that perfect look like you've just come from the salon.

Cool tip



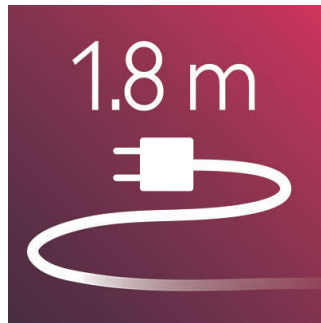
The tip of the styler is made from a special heat insulating material to keep it cool; you can safely hold it while you're styling for optimal ease of use.

Instant heat up



The curler has a fast heat up time, being ready to use in 60 seconds.

1.8 m cord



1.8 m power cord

Safe usage



Some hair straighteners and curling irons have been equipped with an automatic shut-off feature. This feature has been designed to provide peace of mind. If left on, the appliance will automatically switch off after 60 min.

Safety stand

The safety stand enables you to put the curler down safely during use.

Universal voltage



Worldwide voltage for getting the perfect travel companion

Specifications

Technical specifications

- Barrel diameter: 38 mm
- Cord length: 1.8 m
- Color/finishing: dark blue and gold
- Heating time: 60s
- Maximum temperature: 210 °C
- Heater type: PTC ceramic heater
- Temperature range: digital settings

Features

- Ceramic coating
- Ready for use indicator
- Cool tip
- Swivel cord
- Hanging loop

Hair type

- End result: Soft curls and waves
- Hair thickness: Thin, Thick, Medium
- Hair length: Long, Medium

Service

- 2-year worldwide guarantee

