

Philips  
Airstyler

1000W  
Ceramic  
4 attachments

HP4674/00



Everyday the frizz-free, shiny style you desire

## Salon Airstylist Ion

Say hello to smooth shiny hair on a daily basis. The SalonAirstylist Ion 1000W combines ionic technology, four styling attachments and professional power to banish frizz forever

### Easy to use

- 1.8 m power cord
- Three flexible settings for more control
- Swivel cord to prevent tangled wires
- Easy storage hook for convenient storage
- Ergonomic handle for ease of use

### Beautifully styled hair

- Retractable bristle brush for easy curling
- Natural bristle brush for volume and extra shiny hair
- Narrow concentrator for focused airflow
- 38mm thermo brush to smoothen your hair
- 1000W for professional results

### Less Hair Damage

- Cold air setting for gentle drying
- More Care with ion conditioning for shiny, frizz-free hair

**PHILIPS**

# Highlights

## 1000W



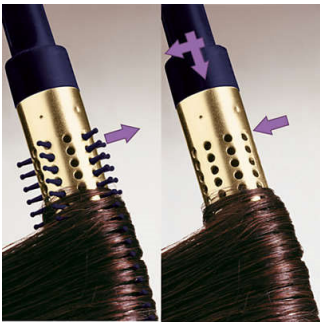
This airstyler has a 1000W heater that creates the optimum level of airflow and gentle drying power.

## Ionic Care



Ionic conditioning enables anti-static drying. Charged negative ions eliminate static hair, condition the hair and smooth down the hair cuticles to intensify the hair's shine and glossiness. The result is smooth and frizz-free hair that shines beautifully.

## Retractable bristle brush



This easy to use airstyler is both a styling brush and curler in one. The bristles retract into the brush at the touch of a button, so you can easily slide the styler out of your hair. What's left is a beautiful bouncy curl.



## 38mm thermo brush



The thermo brush has an extra wide diameter of 38mm. The width of the barrel makes it the perfect styling tool for creating smooth styles and waves.

## Natural bristle brush



The natural hairs in this bristle brush gently smoothen the hair cuticles to give that extra shine to your hair.

## Narrow concentrator



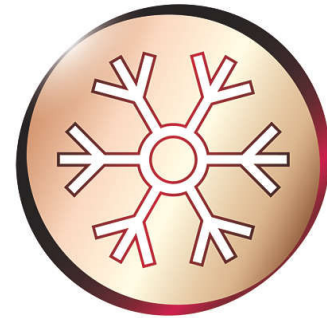
The concentrator works by focusing the flow of air through the opening onto specific areas. This results in precise styling and is great for touch-up or to finish a style.

## Three flexible settings



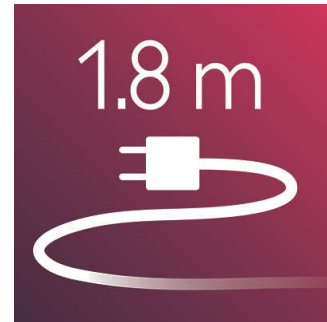
The speed and heat required can be easily adjusted to create the perfect end result. Three flexible settings ensure precise and tailored styling.

## Cold air setting



A cold air setting is a low heat setting that gently dries the hair to minimize damage. This function is suitable for all hair types, but especially for fine, dry or damaged hair. It is a perfect setting for the hot summer season!

## 1.8 m cord



1.8 m power cord

# Specifications

## Technical specifications

- Color/finishing: dark blue and gold
- Cord length: 1.8 m
- Wattage: 1000 W

## Features

- Ceramic coating
- Swivel cord
- Hanging loop
- Settings: 3 heat/speed settings
- Ion conditioning

## Hair type

- End result: Multi-styles
- Hair thickness: Thin, Medium, Thick
- Hair length: Medium, Long

## Attachments

- Nozzle
- Retractable bristle brush
- Natural mixed bristle brush

## Service

- 2-year guarantee



Issue date 2022-06-25

Version: 7.1.1

© 2022 Koninklijke Philips N.V.  
All Rights reserved.

Specifications are subject to change without notice.  
Trademarks are the property of Koninklijke Philips N.V.  
or their respective owners.

[www.philips.com](http://www.philips.com)