

PHILIPS

Curler

SalonCurl Ceramic

Ceramic

20 mm tong

HP4658/00



Create the curls you desire

SalonCurl Ceramic curling iron

Tight, loose, sculpted or bouncy. Give your hair style exactly the type of curls and waves you want with the SalonCurl Ceramic. A 20mm barrel and professional ceramic coating sets this professional curling iron apart from the rest

Beautifully styled hair

- Slide on brush for added volume and beautiful waves
- 180°C temperature for beautiful results
- 20mm tong for beautiful curls

Ease of use

- Ready for use indicator
- Cool tip for easier and safer use
- Swivel cord to prevent tangled wires
- On/off indication light
- Universal voltage
- Fast heat up time, ready to use in 60 seconds
- 2.2 m power cord for maximum flexibility

Less hair damage

- Protective ceramic coating

Highlights

20mm tong



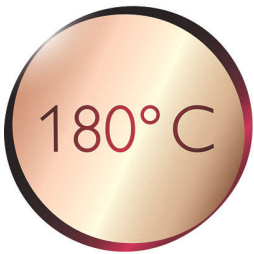
If you want to create beautiful curls, you need to use a curling iron with a medium sized diameter. 20 mm is the perfect size for creating fashionable wide curls and waves.

Gentle on your hair



Protective ceramic coating ensures even heat distribution and less hair damage for shiny and soft hair.

180°C temperature



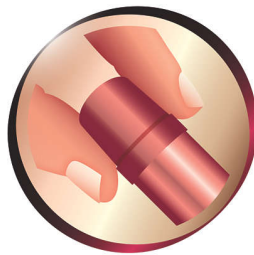
This high temperature enables you change the shape of your hair, and gives you that perfect look like you've just come from the salon.

Slide-on brush



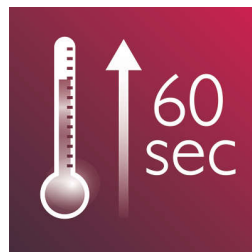
This attachment can be easily placed on tong to create additional volume and beautiful wavy styles.

Cool tip



The tip of the styler is made from a special heat insulating material to keep it cool; you can safely hold it while you're styling for optimal ease of use.

Instant heat up



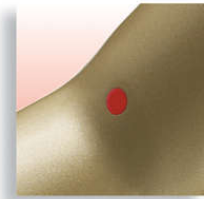
The curler has a fast heat up time, being ready to use in 60 seconds.

On/off indication light



On/off indication light

Ready for use indicator



Ready for use indicator: the dot turns white when ready for use

Swivel cord



Useful swivel cord technology rotates the cord to prevent tangled wires.

2.2 m power cord

2.2 m power cord for maximum flexibility

Universal voltage



Worldwide voltage for getting the perfect travel companion

Specifications

Technical specifications

Cord length: 2.2 m

Heating time: 60s

Barrel diameter: 20 mm

Color/finishing: dark purple and gold

Maximum temperature: 180 °C

Voltage: worldwide

Heater type: PTC ceramic heater

Temperature range: one setting

Features

Ceramic coating

Ready for use indicator

Cool tip

Swivel cord

Hanging loop

Hair type

End result: Tight and bouncy curls

Hair length: Medium, Long

Hair thickness: Thin, Medium, Thick

Service

2-year worldwide guarantee

