

PHILIPS

Hair Dryer Essential

1600W

ThermoProtect setting

Foldable handle

Universal voltage



BHD006/00



Powerful drying with care on the go

The Philips Hair Dryer Essential provides you with powerful drying of 1600W, while caring for your hair with the ThermoProtect temperature setting. Its compact design with foldable handle is the perfect choice wherever you go.

Easy to use

- Universal voltage for worldwide use
- 3 flexible heat and speed settings
- Easy storage hook for convenient storage
- Foldable handle for easy storage

Beautifully styled hair

- 1600W of drying power
- ThermoProtect temperature setting
- Cool shot to set your style

Attachments

- 20mm nozzle for focused airflow

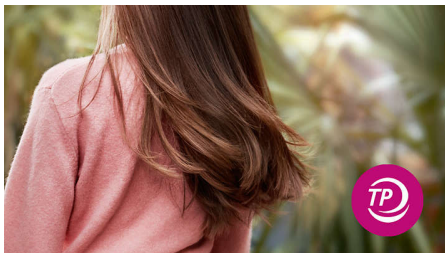
Highlights

1600W of drying power



This 1600W hair dryer creates the optimum level of airflow, for beautiful results every day.

ThermoProtect temperature



The ThermoProtect temperature setting provides the optimal drying temperature and gives additional protection from overheating the hair. With the same powerful airflow, you will get the best results in a caring way.

Foldable handle



The compact design with foldable handle makes it easy to pack, store and take the hair dryer with you anywhere you go.

Universal voltage



Compatible with 110-240 volts. Can be used wherever you travel in the world.

3 flexible speed settings



This hairdryer offers 3 pre-selected speed/heat combinations to make it quick and easy to achieve the perfect style.

20 mm nozzle



The nozzle focuses the airflow for precision styling and touch-ups.

Cool shot



The Cool shot provides a burst of cold air - a must-have setting to set and finish your style.

Easy storage hook



A rubberized hook can be found on the base of the handle. Use to store easily at home or if staying at a hotel.

Specifications

Weight & dimensions

Product size: 274 x 78 x 174mm

Product weight (excl. pack): 425g

Technical specifications

Cord length: 1.8 m

Voltage: 110-127 / 220-240 V

Color/finishing: ABS high gloss and matt

Wattage: 1600 W

Frequency: 50-60 Hz

Motor: DC Motor

Features

Foldable handle

Hanging loop

Dual voltage

Number of attachments: 1

Nozzle / Concentrator

Coolshot

Service

2-year worldwide warranty

