

Philips  
Straightener

HP8350/00



## Salon style that stays all day

### SalonStraight Pro XL

For use on all hairtypes but specially designed for long or thick hair, the SalonStraight Pro XL makes straightening quick and easy. Ceramic plates and a professional temperature of 220°C ensures great results

#### **Ease of use**

- Digital heat settings to ensure super smooth results
- Automatic shut-off after 60 min
- Ready to use indicator
- Easy lock for convenient storage
- 1.8 m power cord
- Universal voltage
- Fast heat up time, ready to use in 30 seconds
- Swivel cord to prevent tangled wires

#### **Beautifully styled hair**

- Extra wide plates for better results with thick or long hair
- 220°C professional high heat for perfect salon results
- Ceramic plates for smooth gliding and shiny hair

#### **Less hair damage**

- EHD+ technology for more protection and shinier results

# PHILIPS

# Highlights

## Wide plates



These extra wide straightening plates have been designed specifically for thick or long hair. The increased plate width can straighten more hair in one go and will help to reduce the time taken.

## Ceramic plates



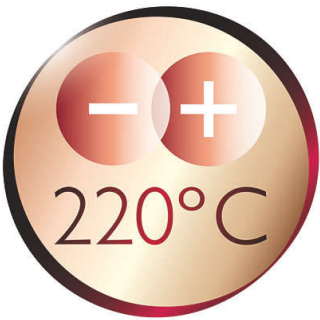
Ceramic is microscopically smooth and durable by nature and it is one of the best materials for straightening plates. The plates glide effortlessly through your hair, giving you perfect shiny hair.

## Safe usage



Some hair straighteners and curling irons have been equipped with an automatic shut-off feature. This feature has been designed to provide peace of mind. If left on, the appliance will automatically switch off after 60 min.

## 220°C professional temperature



This high temperature enables you change the shape of your hair, and gives you that perfect look like you've just come from the salon.

## Digital heat settings

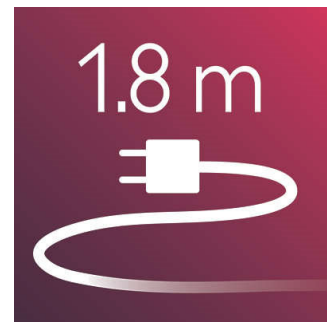


Digital heat settings make it easy to quickly choose the function you need or adjust the styling temperature using the digital display. This enables you to select the perfect temperature for your specific hair and needs. The result is perfect styling at the touch of a button.

## Easy lock

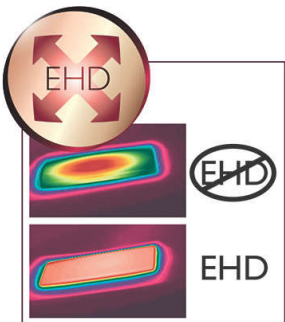
Easy lock for convenient storage

## 1.8 m cord



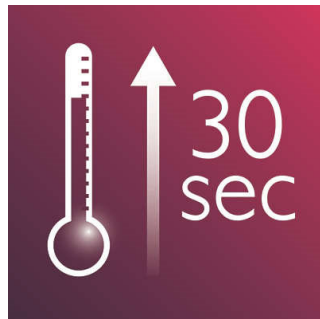
1.8 m power cord

## EHD+ technology



Advanced Philips EHD+ technology means that your styler will always distribute the heat very evenly - even at high temperatures, and prevents damaging hot spots. This gives added protection and thus helps to keep your hair healthy and shiny.

## Instant heat up



The straightener has a fast heat up time, being ready to use in 30 seconds

## Ready to use indicator



This shows when the styler has reached the right temperature, so you can instantly see when you're ready to style.

# Specifications

## Technical specifications

- Cord length: 1,8 m
- Heating time: 30s
- Maximum temperature: 220 °C
- Heater type: High-performance

## Features

- Ceramic coating
- Ready for use indicator
- Swivel cord

## Hair type

- End result: Straight
- Hair thickness: Thin, Thick
- Hair length: Long, Medium, Short

## Service

- 2-year worldwide guarantee



Issue date 2022-06-25

Version: 8.1.1

© 2022 Koninklijke Philips N.V.  
All Rights reserved.

Specifications are subject to change without notice.  
Trademarks are the property of Koninklijke Philips N.V.  
or their respective owners.

[www.philips.com](http://www.philips.com)