

# PHILIPS

## Straightener

### SalonStraight DUO

210°C

Ceramic

Marble protection

HP4688/00



## Straight and protect, dual treatment in one go

### SalonStraight DUO

The SalonStraight DUO's cool marble protection plates eliminate excess heat immediately after straightening, so the end temperature of the hair is much lower than with another straightener using the same styling temperature.

#### **Ease of use**

- Swivel cord to prevent tangled wires
- Easy lock for convenient storage
- Automatic shut-off after 60 min
- On/off indication light
- On/off switch
- Easy storage hook for convenient storage
- Heat resistant pouch
- 1.8 m power cord

#### **Beautifully styled hair**

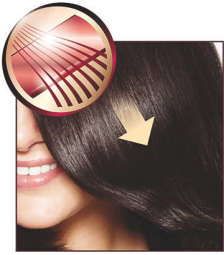
- Ceramic plates for smooth gliding and shiny hair
- 210°C professional high heat for perfect salon results
- Adjustable heat settings to ensure smooth results

#### **Less hair damage**

#### **Time saving**

# Highlights

## Ceramic plates

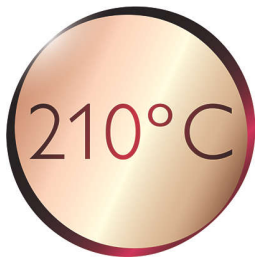


Ceramic is microscopically smooth and durable by nature and it is one of the best materials for straightening plates. The plates glide effortlessly through your hair, giving you perfect shiny hair.

## Adjustable heat settings

Adjustable heat settings allow you to quickly and easily change the styling temperature from low to high. This enables you to select the perfect temperature for your specific hair and needs so you can always get the smooth, styling result you want.

## 210°C professional temperature



This high temperature enables you change the shape of your hair, and gives you that perfect look like you've just come from the salon.

## Marble protection plate

The white marble protection plates absorb access heat immediately after straightening, to limit the damage done to the hair.

## Instant heat

Now more waiting around for your styler to heat up, this allows you to switch on and get styling.

## On/off switch

On/off switch

## Easy storage hook



The rubberised hook is located at the base of the handle and provides another storage option, particularly convenient for use in the home or when staying at a hotel.

## Swivel cord



Useful swivel cord technology rotates the cord to prevent tangled wires.

## Easy lock



The straightener has an easy lock mechanism. Located at the base of the straightener, this flip lock makes storage quick and easy and will help to protect the straightener from accidental damage.

## Heat resistant pouch

This Heat Resistant pouch is perfect for styling on the go. Forget waiting for your styler to cool down. Simply store using the heat resistant pouch included.

## Safe usage



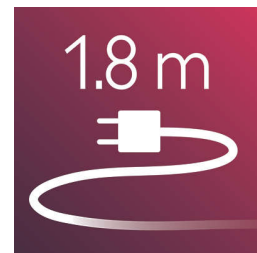
Some hair straighteners and curling irons have been equipped with an automatic shut-off feature. This feature has been designed to provide peace of mind. If left on, the appliance will automatically switch off after 60 min.

## On/off indication light



On/off indication light

## 1.8 m cord



1.8 m power cord

# Specifications

## Weight and dimensions F-box

Net product dimensions excl. attachments: 279

(l) x 50.2 (w) x 30.5 (h) mm

F-box dimensions: 400 (l) x 95 (w) x 190

(h) mm

Weight of net product incl. attachments:

462 g

F-box weight (including product): 1080 g

F-box volume (cm<sup>3</sup>): 7220

## Pallet

Number of layers: 4

Pallet dimensions: 1200 x 80 x 180 (h) mm

Number of A-boxes per layer: 6

Pallet quantity: 144 pcs

## Weight and dimensions A-box

Number of F-boxes in A-box: 6

A-box dimensions: 423 (l) x 310 (w) x 414

(h) mm

A-box volume: 54287.8 cm<sup>3</sup>

A-box weight (including products): 7230 g

## Accessories

Heat resistant travel pouch

## Technical specifications

Voltage: 110-240 V

Frequency: 50/60 Hz

Wattage: 29 W

