

# PHILIPS

## Hair Dryer

### 3000 Series

1600W

ThermoProtect attachment

3 heat & speed settings



BHD302/13

## Powerful drying at a lower temperature with the ThermoProtect attachment

The uniquely-designed ThermoProtect attachment powerfully mixes warm and cool air for everyday care.

### Easy to use

- 3 heat and speed settings
- Slim nozzle for touch-ups and detailed styling

### Care and protect

- ThermoProtect attachment

### Powerful drying

- 1600W of drying power
- Cool air setting to finish your style

# Highlights

## 1600W of drying power



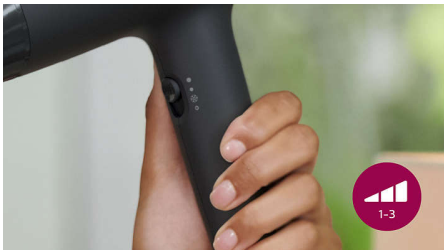
This 1600W hair dryer creates the optimum level of airflow, for beautiful results every day.

## ThermoProtect attachment



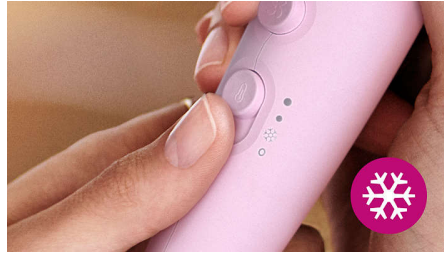
The uniquely-designed ThermoProtect attachment powerfully mixes warm and cool air for everyday care. It drops the temperature by 10°C while still drying your hair quickly.

## 3 heat and speed settings



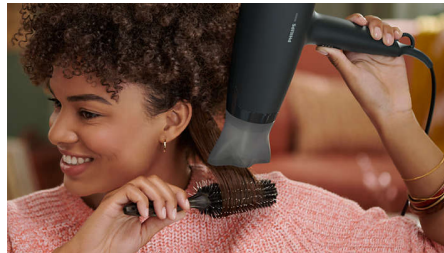
This hairdryer offers 3 preselected heat/speed combinations, making it quick and easy to achieve the perfect style.

## Cool air setting



The cool air setting provides a burst of cold air to finish and hold your style.

## 14 mm styling nozzle



The slim nozzle precisely focuses the air, for quick touch-ups and perfecting small details of your style.

# Specifications

## Attachments

Nozzle: 14 mm  
ThermoProtect attachment

## Technical specifications

Cord length: 1.8 m  
Voltage: 220-240 V  
Wattage: 1600 W  
Motor: DC

## Consumer Trade Item

Height: 21.5 cm  
Width: 29.5 cm  
Length: 9 cm  
Net weight: 0.617 kg  
Gross weight: 0.794 kg  
GTIN: 8710103961574  
Country of origin: CN  
Harmonized system code: 85163100

## Outer Carton

Height: 23.5 cm  
Width: 38 cm  
Length: 60 cm  
Net weight: 4.94 kg  
Gross weight: 6.899 kg  
GTIN: 18710103961571

## Features

Storage hook  
Heat/Speed settings: 3  
Settings: Cool air setting

## Service

2-year worldwide warranty

## Caring technologies

ThermoProtect

