

# PHILIPS

## KeraShine Straightener temp control

Ceramic Keratin

Temperature Control

Ionic Care

Extra wide plates

HP8318/00



## Straight and smooth with extra care & control

This straightener with temperature control, ionic technology, and keratin coating will help you get the beautiful hair and style you want in less time. The extra large plates have been designed for thick or long hair and to minimize damage.

### **Ease of use**

- Fast heat up time, ready to use in 60 seconds
- 1.8 m cord for maximum flexibility
- Swivel cord to prevent tangled wires
- Easy lock for convenient storage

### **Beautifully styled hair**

- More care with ionic conditioning for shiny, frizz-free hair
- Extra wide plates for better results with thick or long hair
- Silky smooth plates and less heat exposure

### **Care and protect**

- 210°C professional high heat for perfect salon results
- Extra care and control with 2 temperature settings
- Keratin ceramic plates for smooth gliding and shiny hair

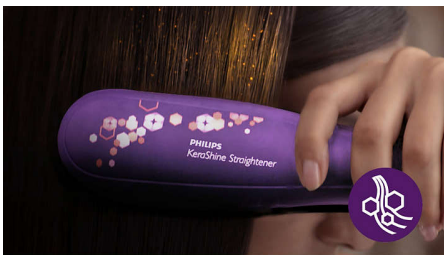
# Highlights

## SilkPro Care



Enjoy style and care with the Philips SilkPro Care technology. Plates smoother than silk glide through your hair with optimized temperature, minimizing friction and resulting in less heat exposure. For beautifully straightened silky smooth hair.

## Keratin infused ceramic plates



Keratin infused ceramic plates for ultimate shine and ultrasmooth gliding.

## Ionic Care



Give your hair instant care with ionic conditioning. Charged negative ions eliminate static, condition your hair, and smooth the hair

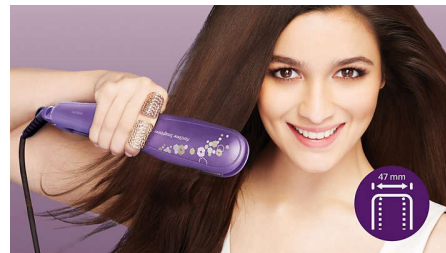
cuticles to intensify shine and glossiness. The result is smooth and frizz-free hair with beautiful shine.

## Variable Temperature Control



The temperature settings allow you to adjust the styling temperature to 190°C or 210°C for extra care at lower temperatures and more control over your preferred styling setting.

## Wide plates



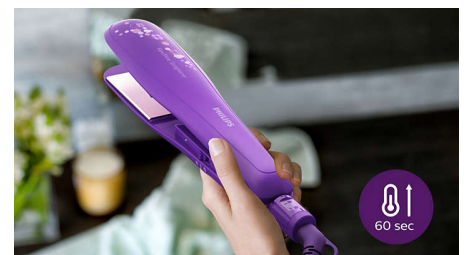
These extra wide straightening plates have been designed specifically for thick or long hair. The increased plate width can straighten more hair in one go and will help to reduce the time required to style.

## 210°C professional high heat



This high temperature enables you change the shape of your hair and gives you that perfect look like you've just come from the salon.

## Instant heat up



The straightener has a fast heat up time, being ready to use in 60 seconds

## 1.8 m cord



1.8 m cord for maximum flexibility

## Swivel cord

Useful swivel cord technology rotates the cord to prevent tangled wires.

## Easy lock

Easy lock for convenient storage

# Specifications

## Technical specifications

Voltage: Worldwide V

Cord length: 1.8 m

Heat-up time: 60 sec

Styling temperature: 210°C

Wide Plates: 47x75mm

## Features

Temperature Settings: 210°C - 190°C

Swivel cord

Storage hook

Ionic care

Keratin ceramic coating

Plate lock

## Service

2-year worldwide guarantee

