

PHILIPS

Wet and dry electric shaver

Shaver series 9000
SensoTouch

UltraTrack & GyroFlex 3D

60 min cordless use/1 hr charge

Precision trimmer

RQ1280/17



Ultimate shaving experience

with GyroFlex 3D system

Our most advanced shave yet, the SensoTouch 3D RQ1280 shaver gives you the ultimate shaving experience. The GyroFlex 3D system follows every contour of your face and the UltraTrack heads shave every hair in just a few strokes.

Follows the unique contours of your face

- Philips GyroFlex 3D system adjusts seamlessly to every curve

Sensationally smooth shave

- UltraTrack heads catch every hair with just a few strokes
- Shavers with Super Lift & Cut Action

An electric shaver that takes care of your skin

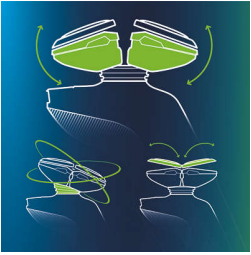
- Aquatec seal for comfortable dry shaves and refreshing wet shaves
- Smooth, low-friction SkinGlide to minimise irritation

Shave with perfect control and precision

- Easy-grip handle with ergonomic grip for close control
- Skin-friendly precision trimmer

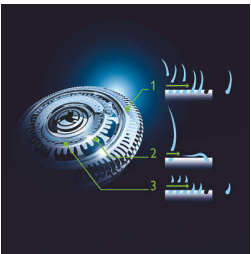
Highlights

GyroFlex 3D Shaver



The GyroFlex 3D contour-following heads of the shaver adjust seamlessly to every curve of your face, minimising pressure and irritation on your skin.

UltraTrack Shaver Heads



Get a close shave that minimises skin irritation. The shaving head has 3 specialised tracks: slots for normal hair, channels for long or flat laying hair and holes for the shortest stubble on your face.

Super Lift & Cut Action



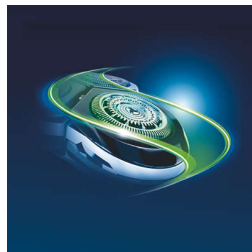
The dual-blade system built into the Philips electric shaver lifts hairs to cut comfortably below skin level for a closer shave.

Aquatec



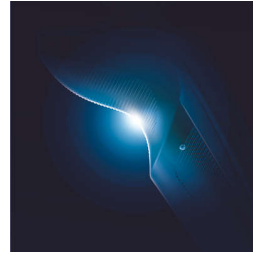
The Aquatec wet and dry seal of the electric shaver lets you choose how you prefer to shave. You can get a comfortable dry shave or a refreshing wet shave using a shaving gel or foam for extra skin comfort.

SkinGlide



The low-friction SkinGlide shaving surface of the electric shaver slides smoothly along your skin for a close, easy shave.

Easy grip



The easy-grip shaver handle has an ergonomic grip with anti-slip coating, ensuring close control for an extra-precision shave.

Precision trimmer



The unique skin-friendly precision trimmer system is built to avoid unnecessary skin contact. Easy to use for perfect moustache and sideburn trimming.

Specifications

Accessories

Pouch: Luxurious pouch

Maintenance: Cleaning brush, Protective cap

Stand: Foldable charging stand

Power

Battery Type: Lithium-ion

Run time: 60 min

Stand-by power: 0.15 W

Max power consumption: 5.4 W

Automatic voltage: 100–240 V

Design

Finishing: Chromed frame, LED Display

Handle: Slim handle, Easy grip, Anti-slip grip

Colour: Black

Service

Replacement head: Replace every yr with RQ12

2 year guarantee

Shaving Performance

SkinComfort: SkinGlide

Contour following: GyroFlex 3D contour following

Shaving system: UltraTrack shaving heads,

Speed XL shaving heads, DualPrecision System, Patented Super Lift & Cut

Styling: Skin-friendly precision trimmer

Ease of use

Display: Full numeric battery indicator, Battery low indicator, Charge indicator, Travel lock, Cleaning indicator, Replace shaving heads indicator

Wet and Dry: Wet and dry use

Charging: 1 hour, Rechargeable, Cordless, Quick charge

Cleaning: Washable

Shaving time: Up to 20 days

