

Philips
Hairdryer

SalonShine Care

HP8201



Professional style, professional care

SalonShine Care

Get the style you want whilst looking after your hair. The SalonDry Pro offers 1600W of professional drying power.

Easy to use

- Compact design for easy handling
- 1.8 m cord for maximum flexibility
- Easy storage hook for convenient storage
- Foldable handle for easy portability

Beautifully styled hair

- Narrow concentrator for focused airflow
- Six flexible speed and temperature settings for full control
- Volume diffuser enhances volume, for curls and bouncy styles
- 1600W for gentle drying
- Specially designed for Asians
- Coolshot for seal in shine and fix your style

Less Hair Damage

- EHD+ technology for more protection and shinier results
- Thermoprotect for a constant caring temperature of 57°C

PHILIPS

Highlights

Specially designed for Asians



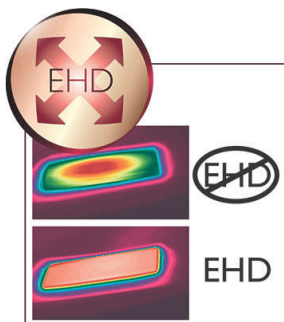
Specially designed for Asians

1600W for gentle drying



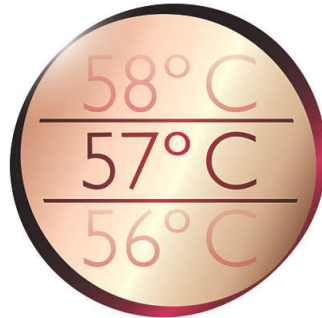
This 1600W hairdryer creates the optimum level of airflow and gentle drying power, for beautiful results every day.

EHD+ technology



Advanced Philips EHD+ technology means that your dryer will always distribute the heat very evenly - even at high temperatures, and prevents damaging hot spots. This gives added protection and thus helps to keep your hair healthy and shiny.

Thermoprotect 57 C



Built in protection for hair, Thermoprotect retains a constant caring temperature of 57°C. This allows you to quickly dry your hair without overdrying, maintaining your hair's natural moisture level, for shiny healthy looking hair.

Six flexible speed settings



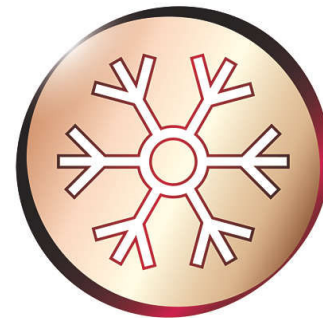
The speed and heat required can be easily adjusted to create the perfect style. Six different settings ensure full control for precise and tailored styling.

Foldable handle



This hairdryer benefits from a foldable handle. The result is a small, compact hair dryer that will easily pack into the smallest spaces and you can take virtually anywhere.

Coolshot



Coolshot for seal in shine and fix your style

Compact design



Compact and ergonomic, this hairdryer benefits from a clever modern design. This results in a dryer that is light and easy to handle yet small enough to store virtually anywhere.

Easy storage hook



The rubberised hook is located at the base of the handle and provides another storage option, particularly convenient for use in the home or when staying at a hotel.

Specifications

Technical specifications

- Cord length: 1,8 m
- Wattage: 1600 W

Features

- Foldable handle

- Cool shot
- Hanging loop

Service

- 2-year guarantee



Issue date 2022-06-25

Version: 10.0.1

© 2022 Koninklijke Philips N.V.
All Rights reserved.

Specifications are subject to change without notice.
Trademarks are the property of Koninklijke Philips N.V.
or their respective owners.

www.philips.com

* **EHD+ - Even Heat Distribution technology - Patent filing in progress