



Philips Shaver series 7000
Shaving unit

Discontinued
Buy SH71 instead

SH70 has been replaced by SH71

Change heads every 2 years for best results

Within two years your shaver heads cut 9 million hairs on your face. Replace the shaver heads and get back to 100% performance. Compatible with the Series 7000 Shaver and Sensotouch 3D.

Improved Version

- The easiest way to keep your shaver at best
- Replacement reminder

Easy to use

- Reset your shaver after replacing shaving heads
- Replace your shaving heads in just two steps

Close and smooth

- A facial shaver for a close yet sensitive shave
- SkinGlide Rings with microspheres for a smoother glide

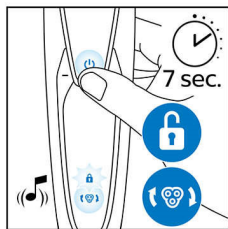
SH70/71

PHILIPS

Shaving unit
Discontinued Buy SH71 instead

Highlights

How to reset your shaver



After replacing shaving heads, you can reset the replacement reminder by pressing the on/off button for more than 7 seconds. Otherwise, replacement trigger will turn off automatically after 9 successive shaves.

Replacement reminder



The latest Philips shavers have an inbuilt replacement reminder in the form of a shaving unit symbol. This symbol will light up and indicate you when to replace shaving heads.

Upgraded Solution



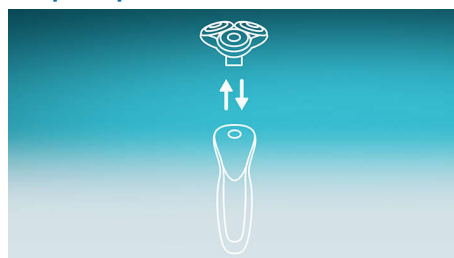
The upgraded solution makes the maintenance of your Philips Shaver easier than ever. This new format will allow you to install the new shaving heads in just two steps, facilitating thorough cleaning of the shaver and optimizing your daily shave.

GentlePrecision Blades



The electric shaver for sensitive skin is equipped with GentlePrecision Blades to minimise tugs, pulls or repetitive passes on your skin. Even when used on 3-day stubble.

Simple replacement



1. Pull the shaving head off. 2. Replace the shaving head with a new one. 3. To reset the shaver, press and hold the on/off button for more than 5 seconds.

SkinGlide Rings



Experience the smooth glide of Philips advanced microsphere technology. Inspired by gliding principles in aerodynamics, the shaver rings are coated with thousands of tiny, glass-like spheres for maximum skin comfort.

SH70/71

Specifications

Shaving heads

- Fits product type: Shaver series 7000 (S79xx), Sensotouch 3D (RQ10xx)(RQ12xx)
- Upgraded shaving heads: SH70 has been replaced by SH71
- Important: SH71 is not compatible with SensoTouch (RQ12xx) or Arcitec shavers (RQ10xx).

Accessories

- Included in pack: A complete Shaving Unit



Issue date 2022-08-25

Version: 7.7.1

© 2022 Koninklijke Philips N.V.
All Rights reserved.

Specifications are subject to change without notice.
Trademarks are the property of Koninklijke Philips N.V.
or their respective owners.

www.philips.com

* Versus its Philips predecessor