



Philips SalonShine  
Hairdryer

1200W

HP4884

# Thermoprotect 57°C

## SalonShine

Protect your hair but still get professional drying results with the SalonShine hairdryer. ThermoProtect retains a constant caring temperature of 57°C, looking after your hair during drying.

### Easy to use

- 1.8 m power cord
- Easy storage hook for convenient storage
- Foldable handle for easy portability

### Beautifully styled hair

- 1200W gentle drying for beautiful results
- Narrow concentrator for focused airflow
- Six flexible speed and temperature settings for full control

### Less Hair Damage

- EHD+ technology for more protection and shinier results
- ThermoProtect for a constant caring temperature of 57°C

### Long lasting styles

- Cold air setting for gentle drying

# PHILIPS

# Highlights

## 1200W



This 1200W hairdryer creates the optimum level of airflow and gentle drying power for beautiful results every day.

## Six flexible speed settings

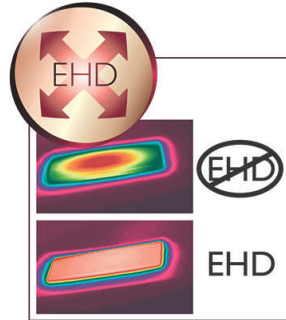


The speed and heat required can be easily adjusted to create the perfect style. Six different settings ensure full control for precise and tailored styling.

## Narrow concentrator

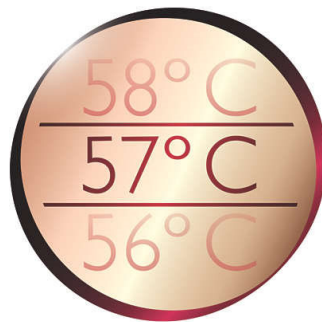
The concentrator of the hair dryer works by focusing the flow of air through the opening onto specific areas. This results in precise styling and is great for touch ups or to finish a hair style.

## EHD+ technology



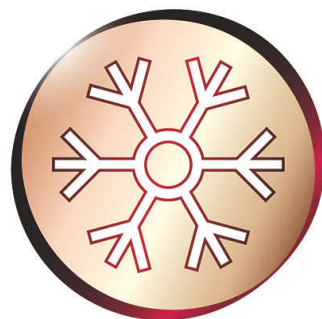
Advanced Philips EHD+ technology means that your dryer will always distribute the heat very evenly - even at high temperatures, and prevents damaging hot spots. This gives added protection and thus helps to keep your hair healthy and shiny.

## Thermoprotect 57 C



Built in protection for hair, Thermoprotect retains a constant caring temperature of 57°C. This allows you to quickly dry your hair without overdrying, maintaining your hair's natural moisture level, for shiny healthy looking hair.

## Cold air setting



A cold air setting is a low heat setting that gently dries the hair to minimize damage. This

function is suitable for all hair types, but especially for fine, dry or damaged hair. It is a perfect setting for the hot summer season!

## Foldable handle



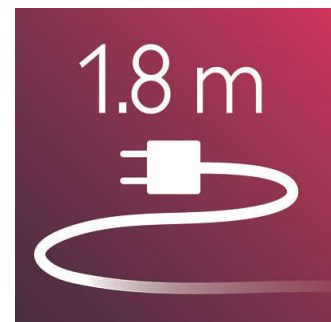
This hairdryer benefits from a foldable handle. The result is a small, compact hair dryer that will easily pack into the smallest spaces and you can take virtually anywhere.

## Easy storage hook



The rubberised hook is located at the base of the handle and provides another storage option, particularly convenient for use in the home or when staying at a hotel.

## 1.8 m cord



1.8 m power cord

# Specifications

## Technical specifications

- Color/finishing: Clear sky blue and cloud dancer white
- Voltage: 220-240 V
- Cord length: 1.8 m
- Power: 1200 W
- Material housing: ABS

## Weight and dimensions F-box

- Net product dimensions excl. attachments: 151x77x236 mm
- F-box dimensions: 258x94x218 mm
- Weight of net product incl. attachments: 399 g
- F-box weight (including product): 565 g
- F-box volume (cm<sup>3</sup>): 5287

## Pallet

- Number of layers: 8

- Pallet dimensions: 1200x800x2048 mm
- Number of A-boxes per layer: 4
- Pallet quantity: 256 pcs

## Weight and dimensions A-box

- Number of F-boxes in A-box: 8
- A-box dimensions: 530x394x238 mm
- A-box weight (including products): 5320 g
- A-box volume (cm<sup>3</sup>): 49699

## Serviceability

- Replacement

## Logistic data

- Country of origin: China
- CTV code: 8844-884-00
- EAN



Issue date 2022-06-25

Version: 3.1.1

© 2022 Koninklijke Philips N.V.  
All Rights reserved.

Specifications are subject to change without notice.  
Trademarks are the property of Koninklijke Philips N.V.  
or their respective owners.

[www.philips.com](http://www.philips.com)