

PHILIPS

Hair Dryer

3000 Series

1600W

ThermoProtect attachment

3 heat & speed settings



BHD302/10

Powerful drying at a lower temperature with the ThermoProtect attachment

The uniquely-designed ThermoProtect attachment powerfully mixes warm and cool air for everyday care.

Easy to use

- 3 heat and speed settings
- Slim nozzle for touch-ups and detailed styling

Care and protect

- ThermoProtect attachment

Powerful drying

- 1600W of drying power
- Cool air setting to finish your style

Highlights

1600W of drying power



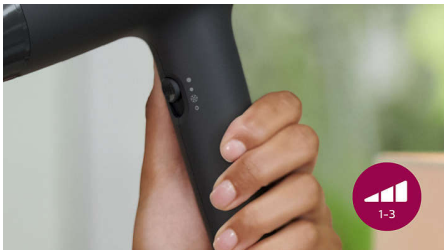
This 1600W hair dryer creates the optimum level of airflow, for beautiful results every day.

ThermoProtect attachment



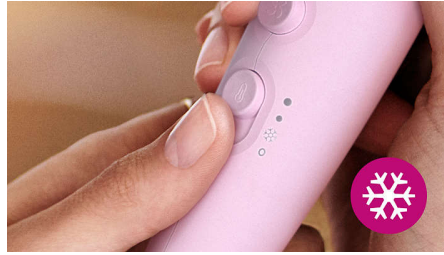
The uniquely-designed ThermoProtect attachment powerfully mixes warm and cool air for everyday care. It drops the temperature by 10°C while still drying your hair quickly.

3 heat and speed settings



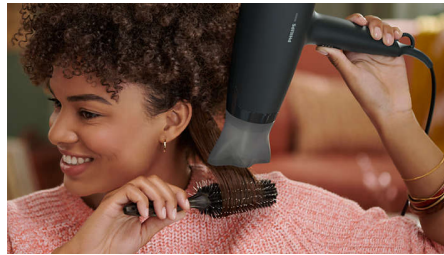
This hairdryer offers 3 preselected heat/speed combinations, making it quick and easy to achieve the perfect style.

Cool air setting



The cool air setting provides a burst of cold air to finish and hold your style.

14 mm styling nozzle



The slim nozzle precisely focuses the air, for quick touch-ups and perfecting small details of your style.

Specifications

Attachments

Nozzle: 14 mm
ThermoProtect attachment

Technical specifications

Cord length: 1.8 m
Wattage: 1600 W
Voltage: 220-240 V
Motor: DC

Features

Storage hook
Heat/Speed settings: 3
Settings: Cool air setting

Service

2-year worldwide warranty

Caring technologies

ThermoProtect

