

# PHILIPS

## Multi-Styler

6 styling attachments

190 C temperature

Ceramic coating

Auto shut-off



HP8698/03



## Instant creativity, constant care

Philips Multi-Styler gives you versatility to create the latest hair style for every occasion while caring for your hair.

### **Ease of use**

- Auto shut-off function after 60 min
- Pouch for easy storage
- Ready to use LED indicator

### **Beautifully styled hair**

- 190°C styling temperature for long lasting result
- 16mm tong and brush sleeve; flat and crimper plates; 2 clips

### **Less damage**

- Ceramic coating on every heat attachment

# Highlights

## 6 piece hairstyler set



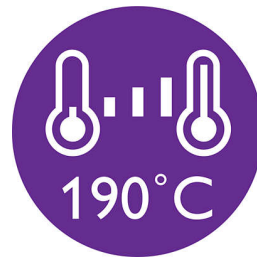
Philips Multi-styler contains: 16mm curling tong for ringlets; brush sleeve for 16mm tong to create additional volume; crimper with 2-in-1 convertible flat and crimper plates for straight and crimped look; two hair clips for easier styling.

## Ceramic coating



Ceramic coating for better care of your hair.

## 190°C styling temperature



190°C styling temperature secures long lasting result while minimizing risk of hair damage.

## Auto shut-off function



The automatic shut-off feature has been designed to provide peace of mind. If left on, the curler will automatically switch off after 60 min.

## Ready to use indicator

LED light stops blinking when the styler is ready to use.

## Pouch

Pouch for easy storage.

# Specifications

## Technical specifications

Barrel diameter: 16 mm

Cord length: 1.8 m

Heat-up time: 3 min

Voltage: Universal

Heater type: PTC

## Accessories

Pouch

## Features

Auto shut-off: after 60 min

Swivel cord

## Consumer Trade Item

Height: 7.1

Width: 31.5

Length: 15.1

Net Weight: .605

Gross Weight: .76

GTIN: 08710103637233

Country of origin: CN

Harmonized system code: 851632

## Outer Carton

Height: 23.5

Width: 31.5

Length: 36.5

Gross Weight: 4.985

GTIN: 18710103712104

