

Philips Shaver series 5000
Shaving heads

MultiPrecision Blades

Fits S5000 (S5xxx), excl. S55xx
Fits AquaTouch (AT8xx, AT7xx,
S5xxx)
Fits S6000 (S6xxx)

SH50/50



Reset your shaver to new

Change heads every 2 years for best results

Within two years your shaver heads cut 9 million hairs on your face. Replace the shaver heads and get back to 100% performance. Compatible with the Series 5000, 6000 and AquaTouch Shaver.

Easy to use

- Reset your shaver after replacing shaving heads
- Replace your shaving heads in just two steps
- Reset your shaver to new
- Easy to replace shaving heads

Compatibility

- Replacement heads for Shaver Series 5000 & 6000

Close, fast shave

- Blades raise then cut long and short hairs for a fast shave
- Super Lift & Cut Action lifts hairs to cut comfortably close

PHILIPS

Shaving heads

MultiPrecision Blades Fits S5000 (S5xxx), excl. S55xx, Fits AquaTouch (AT8xx, AT7xx, S5xxx), Fits S6000 (S6xxx)

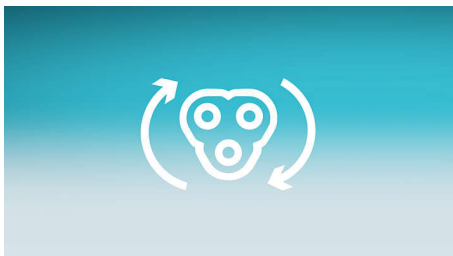
Highlights

Compatible with S5000 & S6000



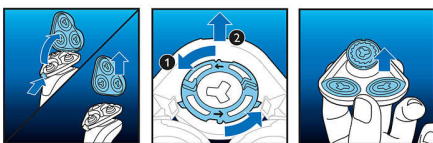
SH50 replacement heads are compatible with Shaver series 5000 (S5xxx) excluding S55xx, Shaver series 6000 (S6xxx), AquaTouch (AT8xx, AT7xx, S5xxx), and PowerTouch (PT8xx, PT7xx).

Replacement reminder



The latest Philips shavers have an inbuilt replacement reminder in the form of a shaving unit symbol. This symbol will light up and indicate you when to replace shaving heads.

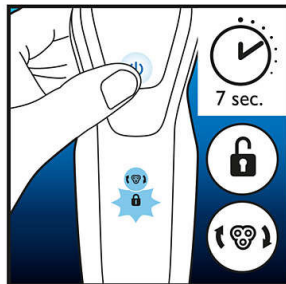
Simple replacement



1. Open the shaver by pressing the "release" button; 2. Remove the retaining rings by turning them counterclockwise; 3. Take out

the old shaving heads and carefully insert replacements; check that the heads align exactly in the setting; 4. Replace the retaining rings and secure them by turning the lock clockwise; 5. When you close the shaving head properly, you will hear it click into place.

How to reset your shaver



After replacing shaving heads, you can reset the replacement reminder by pressing the on/off button for more than 7 seconds. Otherwise, replacement trigger will turn off automatically after 9 successive shaves.

Reset your shaver to new



To get back to 100% performance, replace your shaving heads every 2 years.

SH50/50

MultiPrecision blades



Get a shave that's fast and close. Our MultiPrecision blades raises and cuts all hairs and remaining stubble – all in a few strokes.

Super Lift & Cut Action



Shave closer with the dual-blade Super Lift & Cut action. The first blade raises each hair while the second blade comfortably cuts below skin level, for really smooth results.

Shaving heads

MultiPrecision Blades Fits S5000 (S5xxx), excl. S55xx, Fits AquaTouch (AT8xx, AT7xx, S5xxx), Fits S6000 (S6xxx)

Specifications

SH50/50

Shaving heads

- Shaving heads per packaging: 3
- Fits product type: Shaver series 5000 (S5xxx), excl. S55xx, PowerTouch (PT8xx, PT7xx), Fits AquaTouch (AT8xx, AT7xx, S5xxx), Shaver Series

6000 (S6xxx)

Cleaning

- Usage: Use cleaning spray HQ110



Issue date 2023-03-03

Version: 14.14.1

© 2023 Koninklijke Philips N.V.
All Rights reserved.

Specifications are subject to change without notice.
Trademarks are the property of Koninklijke Philips N.V.
or their respective owners.

www.philips.com