

PHILIPS

Wet and Dry electric shaver

SatinShave Essential

for legs

Single foil shaver

Battery operated

HP6341/00



Safe and easy shaving

With this all-round shaver you can shave your whole body quickly, easily and safely. The secret is the small shaving head that cuts quickly while protecting your skin. A soft and smooth feeling after every use!

Easy to use

- Battery operated
- Wet & dry for use in bath or shower

Effortless control

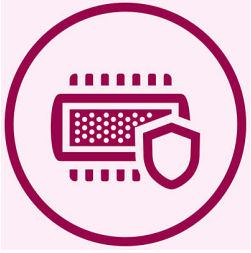
- Profiled, ergonomic grip

Safe shaving

- Safe shaving system for ultimate skin protection

Highlights

Safe shaving system



The gentle small shaving head protects your skin leaving it smooth and soft

Slim ergonomic design

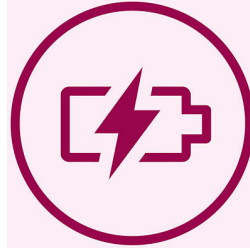


For comfortable handling

Wet & dry use

For a gentle and comfortable use during your shower or bath routine with anti slip grip for optimal wet & dry use.

Battery operated



Shave anywhere with this cordless lady shaver.

Technical specifications

Voltage: 2x 1.5 V

Number of shaving foils: 1

Ease of use

Cordless

Handle: Ergonomic

Wet and dry use

Accessories

Cleaning brush

2 x AA batteries

Travel cap

Performance

Shaving head: Single foil shaver

