

Philips SalonStraight
Seduce
Straightener

210°C

Ceramic
Straight & Curl

HP4668/29



Long-lasting straight and curly styles

SalonStraight Seduce

Now you style your hair with the professional temperature of 210°C. Combining this with ultra-smooth curved ceramic plates, gives you the freedom to create long-lasting straight styles or fashionable flicks and curls.

Ease of use

- Swivel cord to prevent tangled wires
- Dual voltage for worldwide use
- Automatic shut-off after 1 hour

Beautifully styled hair

- Ceramic for ultra-smooth gliding
- For effective results without damaging hot spots
- 210°C professional temperature for long-lasting results

Versatility

- Rounded edges with guide strips for flicks and curls

Time saving

- Adjustable LCD temperature setting to suit your hair type
- Instant heat-up within 30 seconds

PHILIPS

Highlights

Swivel cord



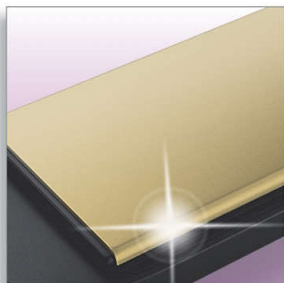
Useful swivel cord technology rotates the cord to prevent tangled wires.

Dual voltage



Dual voltage for worldwide use

Ceramic



Ceramic for ultra-smooth gliding

Shuts off after 1 hour



Automatic shut-off after 1 hour

Even Heat technology

Even Heat technology for effective results without damaging hot spots.

Professional temperature

210°C professional temperature for long-lasting results

Rounded edges

Rounded edges with guide strips for flicks and curls

LCD temperature display

Adjustable LCD temperature setting to suit your hair type

Instant heat-up



Instant heat-up within 30 seconds

Specifications

Technical specifications

- Voltage: 110-240 V
- Cord length: 1,8 m
- Power: 45-65 W

Hair type

- Current hair style: Straight, Wavy, Curly
- End result: Wavy, Straight
- Hair length: Long, Medium
- Hair thickness: Thick, Thin
- For fragile hair

Serviceability

- Replacement



Issue date 2022-06-25

Version: 2.0.1

© 2022 Koninklijke Philips N.V.
All Rights reserved.

Specifications are subject to change without notice.
Trademarks are the property of Koninklijke Philips N.V.
or their respective owners.

www.philips.com