

PHILIPS

Straightener

StraightCare

KeraShine Ionic

BHS386/00



Shiny smooth hair with KeraShine protection

Our KeraShine straightener is infused with a keratin ceramic coating and ionic care, helping to protect your hair while you style. Achieve the beautiful, silky smooth hair you desire with KeraShine.

Ease of use

- Fast heat up time, ready to use in 60 seconds
- Swivel cord to prevent tangled wires
- Easy lock for convenient storage
- Use anywhere in the world with universal voltage
- 1.6 meter cord for maximum flexibility

Beautifully styled hair

- More care with ionic conditioning for shiny, frizz-free hair
- Long plates for fast and easy straightening
- Silky smooth plates and less heat exposure

Care and protect

- Keratin ceramic plates for smooth gliding and shiny hair
- 210°C professional high heat for perfect salon results
- Extra care and control with 2 temperature settings

Highlights

SilkPro Care



Enjoy style and care with the Philips SilkPro Care technology. Plates smoother than silk glide through your hair with optimized temperature, minimizing friction and resulting in less heat exposure. For beautifully straightened silky smooth hair.

Keratin infused ceramic plates

This straightener has keratin infused ceramic plates for ultimate shine and ultrasmooth gliding.

Ionic Care



Give your hair instant care with ionic conditioning. Charged negative ions eliminate static, condition your hair, and smooth the hair

cuticles to intensify shine and glossiness. The result is smooth and frizz-free hair with beautiful shine.

210°C professional high heat



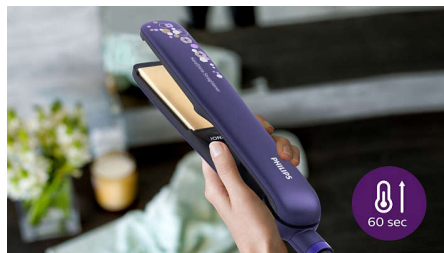
This high temperature enables you change the shape of your hair and gives you that perfect look like you've just come from the salon.

Variable Temperature Control



The temperature settings allow you to adjust the styling temperature to 190°C or 210°C for extra care at lower temperatures and more control over your preferred styling setting.

Instant heat up



The straightener has a fast heat up time, being ready to use in 60 seconds

1.6 Meter Cord



1.6 meter cord for maximum flexibility

Swivel cord

Useful swivel cord technology rotates the cord to prevent tangled wires.

Easy lock

Easy lock for convenient storage

Universal Voltage

This straightener is ready to use anywhere in the world and is compatible with 110-240 voltage.

90mm long plates



The straightening plates have a professional length of 90mm, leading to faster and easier straightening.

Specifications

Technical specifications

Voltage: Worldwide V

Cord length: 1.6 m

Heat-up time: 60 sec

Styling temperature: 210°C

Styling plates: 29x90mm

Features

Temperature Settings: 190°C and 210°C

Swivel cord

Storage hook

Ionic care

Keratin ceramic coating

Plate lock

Service

2-year guarantee

