

PHILIPS

Straightener

SalonStraight

Essential

HP8309/00



Straight hair made easy

SalonStraight Essential

Straighten and style your hair with this easy to use straightener

Beautifully styled hair

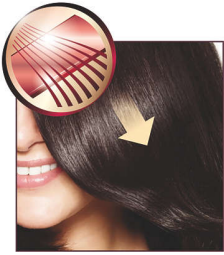
- Ceramic plates for smooth gliding and shiny hair
- 210°C professional high heat for perfect salon results

Ease of use

- 1.8 m power cord
- Easy lock for convenient storage
- Universal voltage
- Fast heat up time, ready to use in 60 seconds
- Swivel cord to prevent tangled wires

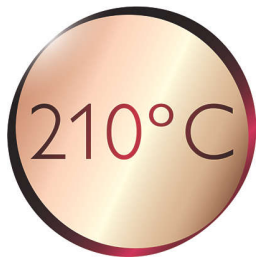
Highlights

Ceramic plates



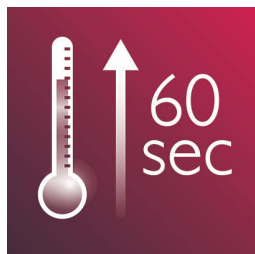
Ceramic is microscopically smooth and durable by nature and it is one of the best materials for straightening plates. The plates glide effortlessly through your hair, giving you perfect shiny hair.

210°C professional temperature



This high temperature enables you change the shape of your hair, and gives you that perfect look like you've just come from the salon.

Instant heat up



The straightener has a fast heat up time, being ready to use in 60 seconds

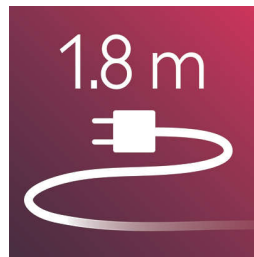
Easy lock

Easy lock for convenient storage

Swivel cord

Useful swivel cord technology rotates the cord to prevent tangled wires.

1.8 m cord



1.8 m power cord

Universal voltage



Worldwide voltage for getting the perfect travel companion

Specifications

Hair type

End result: Straight

Hair length: Long, Medium, Short

Hair thickness: Medium, Thick, Thin

Technical specifications

Voltage: 110–240 V

Cord length: 1.8 m

Heating time: 60s

Maximum temperature: 210 °C

Heater type: PTC

Features

Ceramic coating

Swivel cord

Service

2-year worldwide guarantee

